



THUNDER PAVE

Exceptional Rooftop Surfacing



Thunder Pave

Our unique 22" x 44" tiles have been designed and redesigned over 30+ years to avoid many of the issues suffered by standard 24" x 24" rubber pavers. Larger pavers allow for a more fluid interaction with the substrate, meaning if it's not perfect, there is more leeway for the tiles to conform to slopes and divets than when using other sized material. The 44" length of each tile also allows for many more locking / bond points than a conventional 24" x 24" tile, which helps in avoiding displacement or shifting from general usage and wear throughout the year.

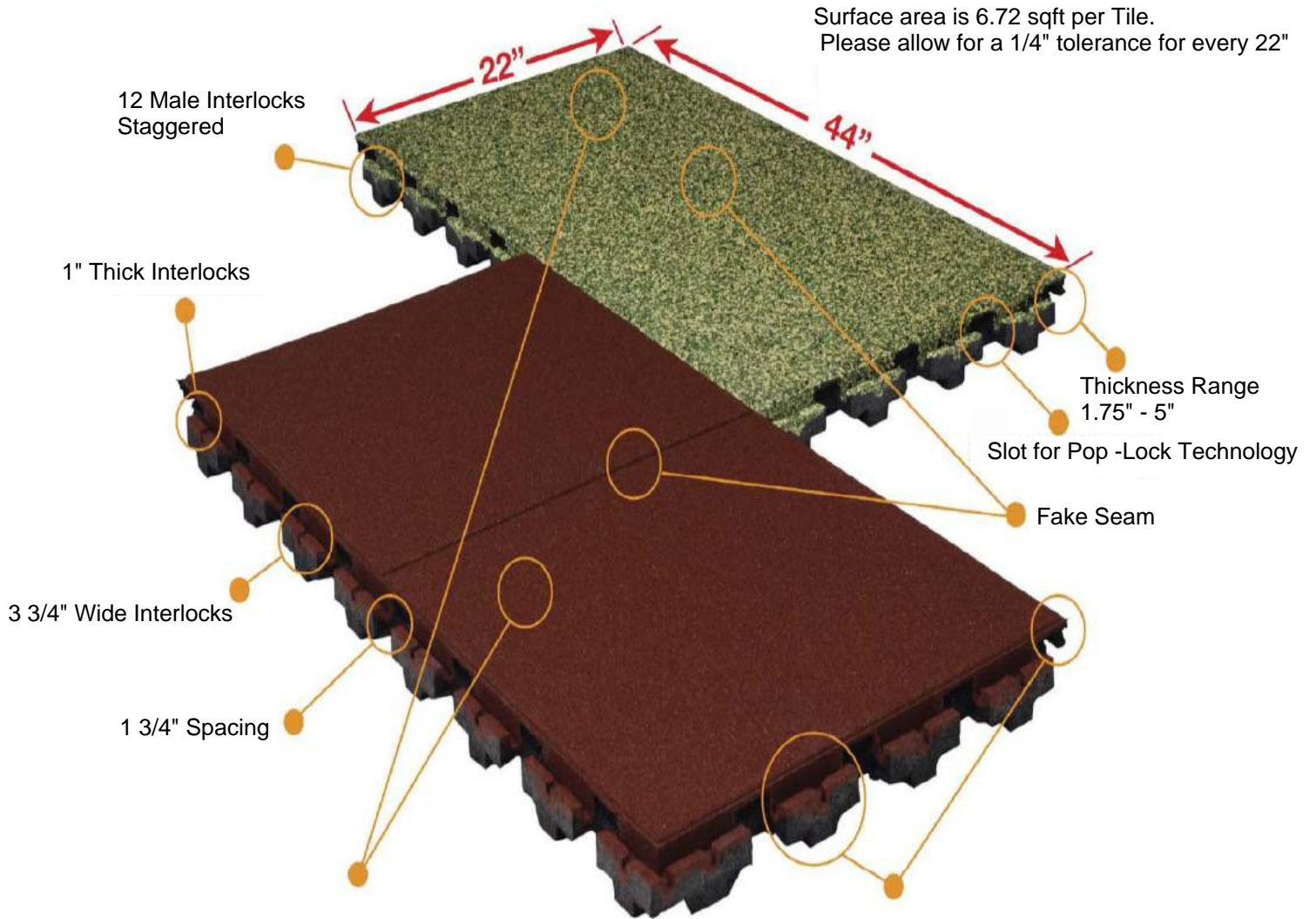


Thunder Pave

Thunder Pave is available in varying thicknesses from 1.75" to 5" in order to allow for different height requirements, as well as to account for fall height needs on rooftop or elevated playground projects.

In addition to different thickness tiles, we also have both pigmented, and TPV rubber granule finishes which allow for each project to be customized to its' owners preferences. Both can be installed side-by-side to achieve different patterns, or to help introduce pop colors in different sections of the play area.

Thunder Pave - Upper View



High Density Wear Tops

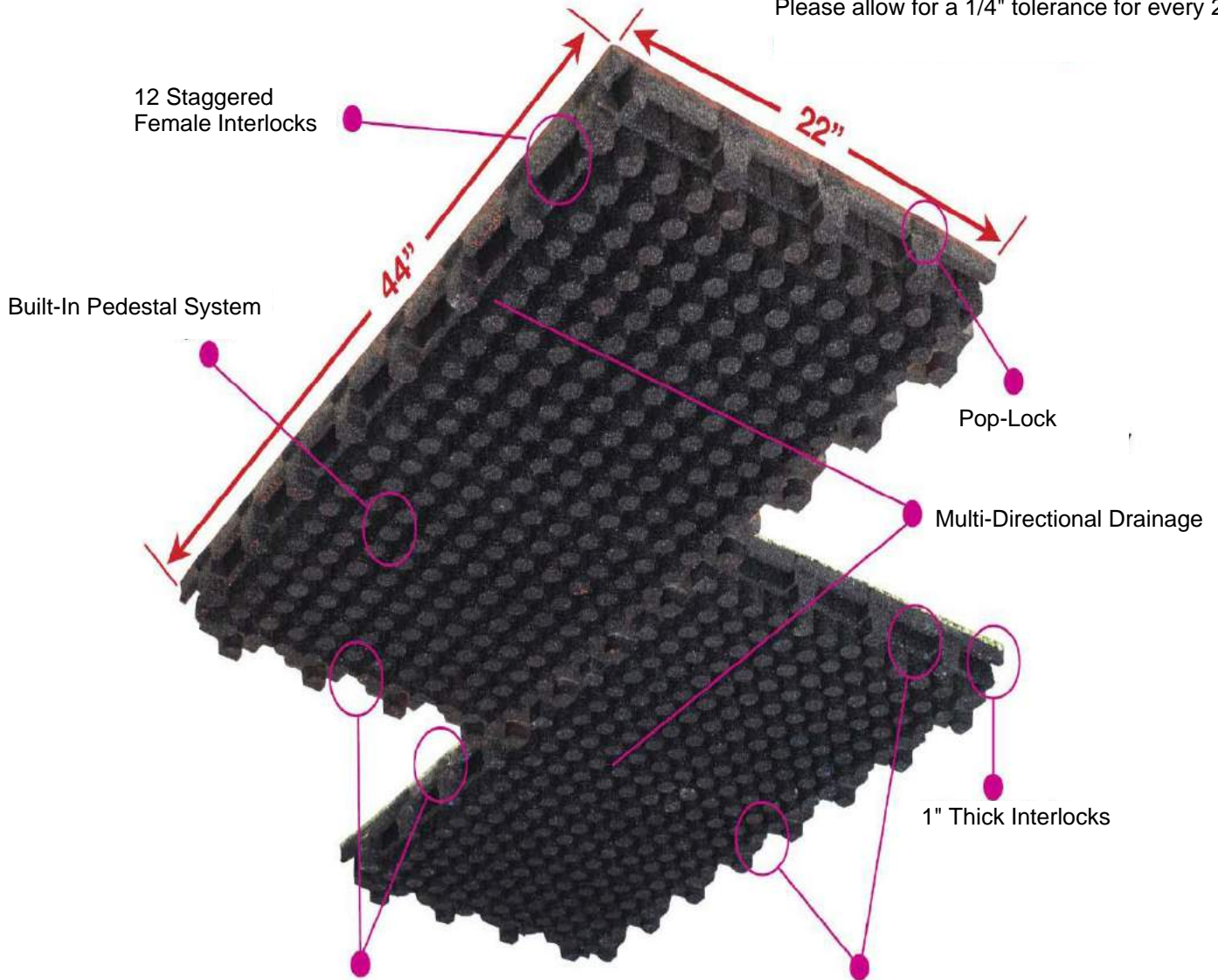


Self Interlocking Design



Thunder Pave - Lower View

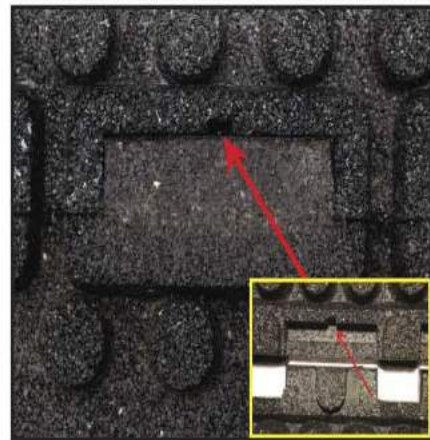
Surface area is 6.72 sqft per Tile.
Please allow for a 1/4" tolerance for every 22"



Pop-Lock Technology



Adhesive Well





800-348-5815 | INFO@THORPP.COM