



THUNDER PLAY

Exceptional Playground Surfacing





Thunder Play

Our unique 22" x 44" tiles have been designed and redesigned over 30+ years to avoid many of the issues suffered by standard 24" x 24" rubber playground tiles. Larger tiles allow for a more fluid interaction with the substrate, meaning if it's not perfect, there is more leeway for the tiles to conform to slopes and divets than when using other sized material. The 44" length of each tile also allows for many more locking / bond points than a conventional 24" x 24" tile, which helps in avoiding displacement or shifting from general usage and wear throughout the year.



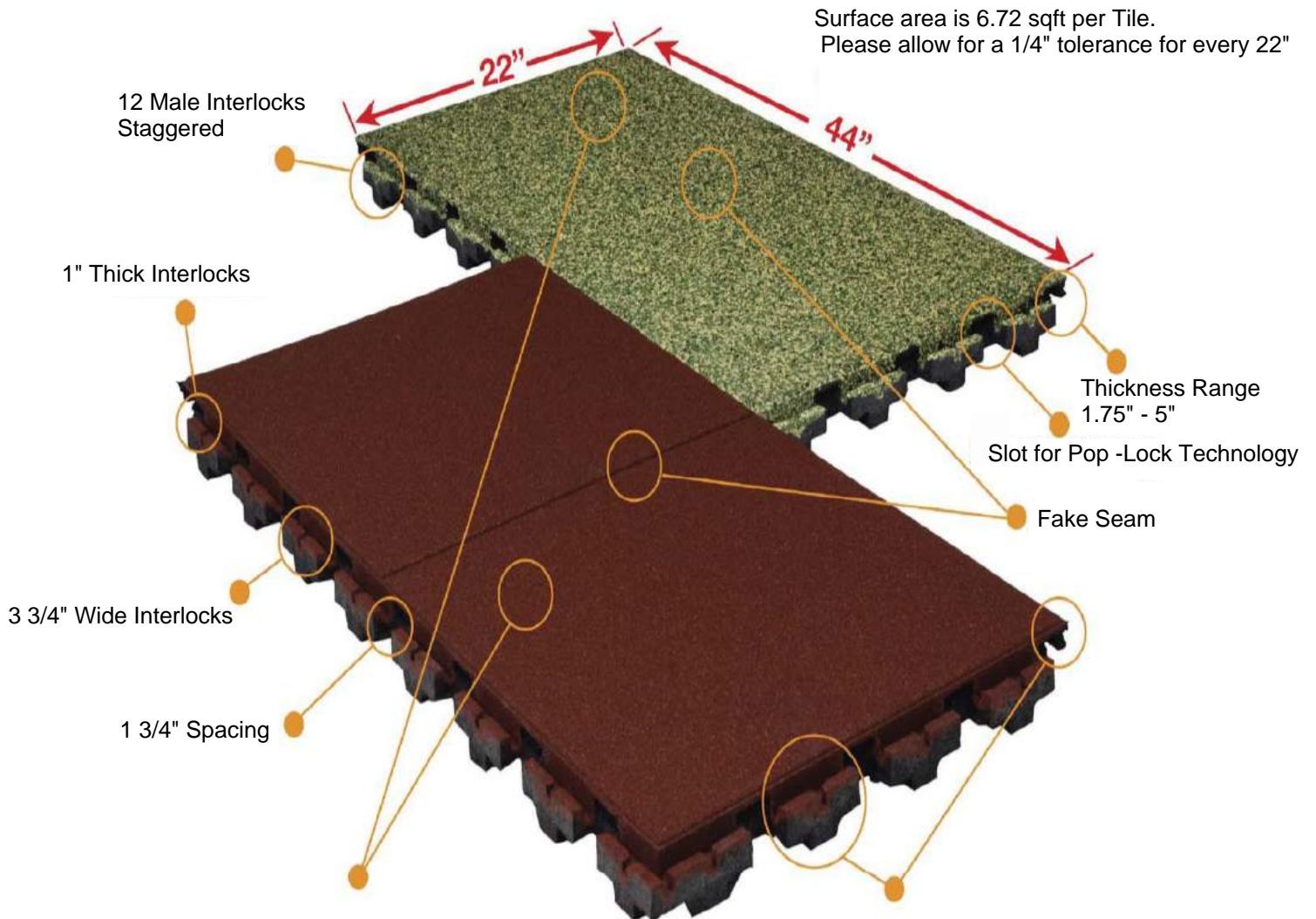


Thunder Play

Our Thunder Play tiles are available in varying thicknesses from 1.75" to 5" in order to fulfill the necessary fall height requirements for your play area - so ask us to help determine which tile will work best for your project from a safety standpoint.

In addition to different thickness tiles, we also have both pigmented, and TPV rubber granule finishes which allow for each playground to be customized to its' owners preferences. Both can be installed side-by-side to achieve different patterns, or to help introduce pop colors in different sections of the play area.

Thunder Play - Upper View



High Density Wear Tops

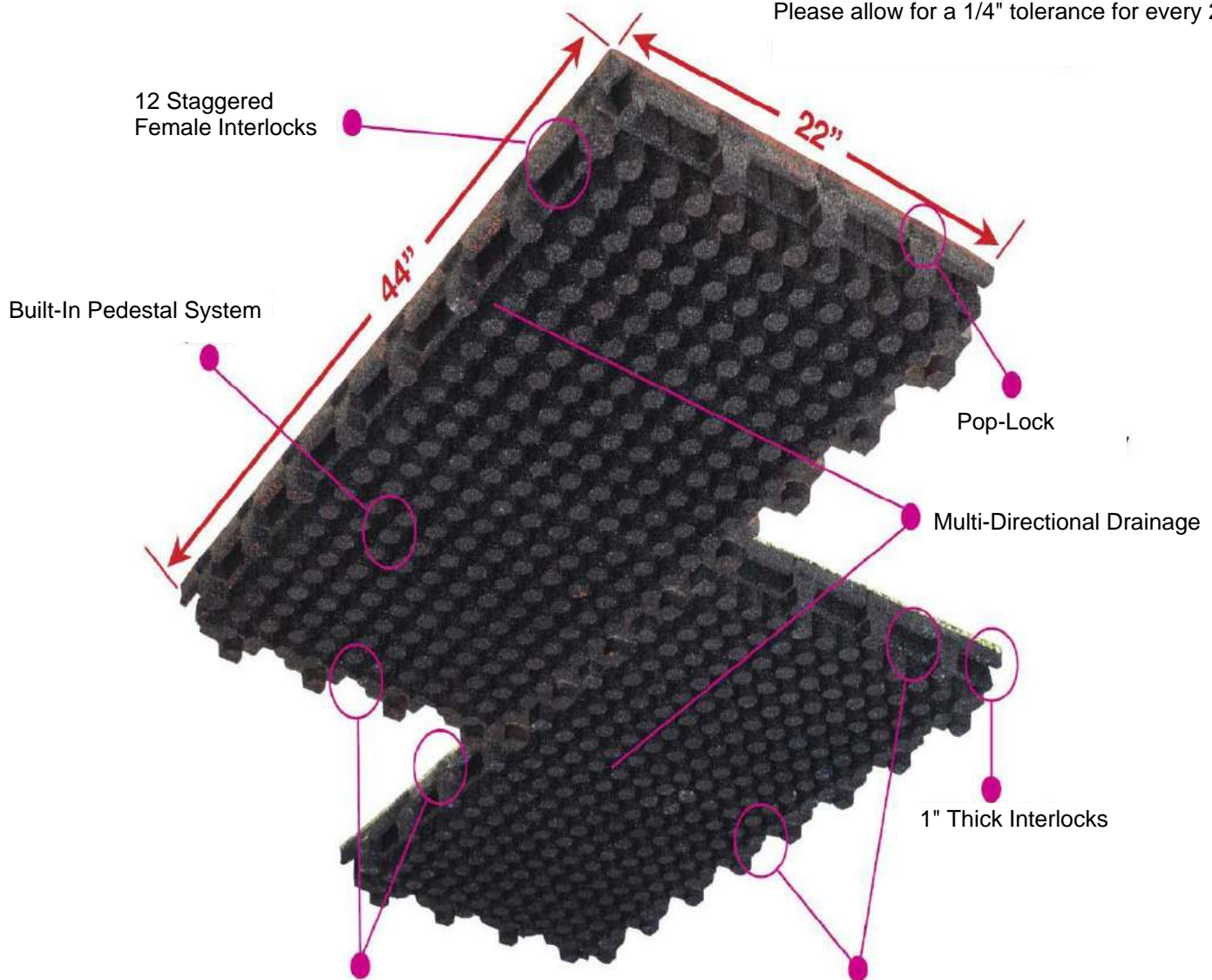


Self Interlocking Design



Thunder Play - Lower View

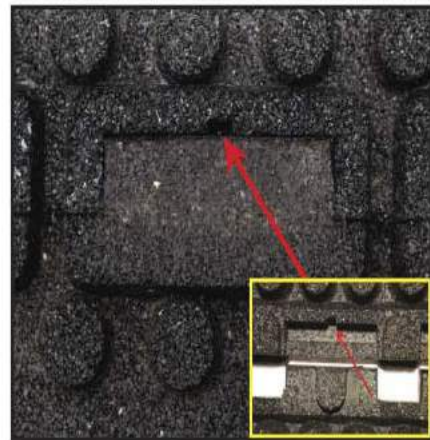
Surface area is 6.72 sqft per Tile.
Please allow for a 1/4" tolerance for every 22"



Pop-Lock Technology

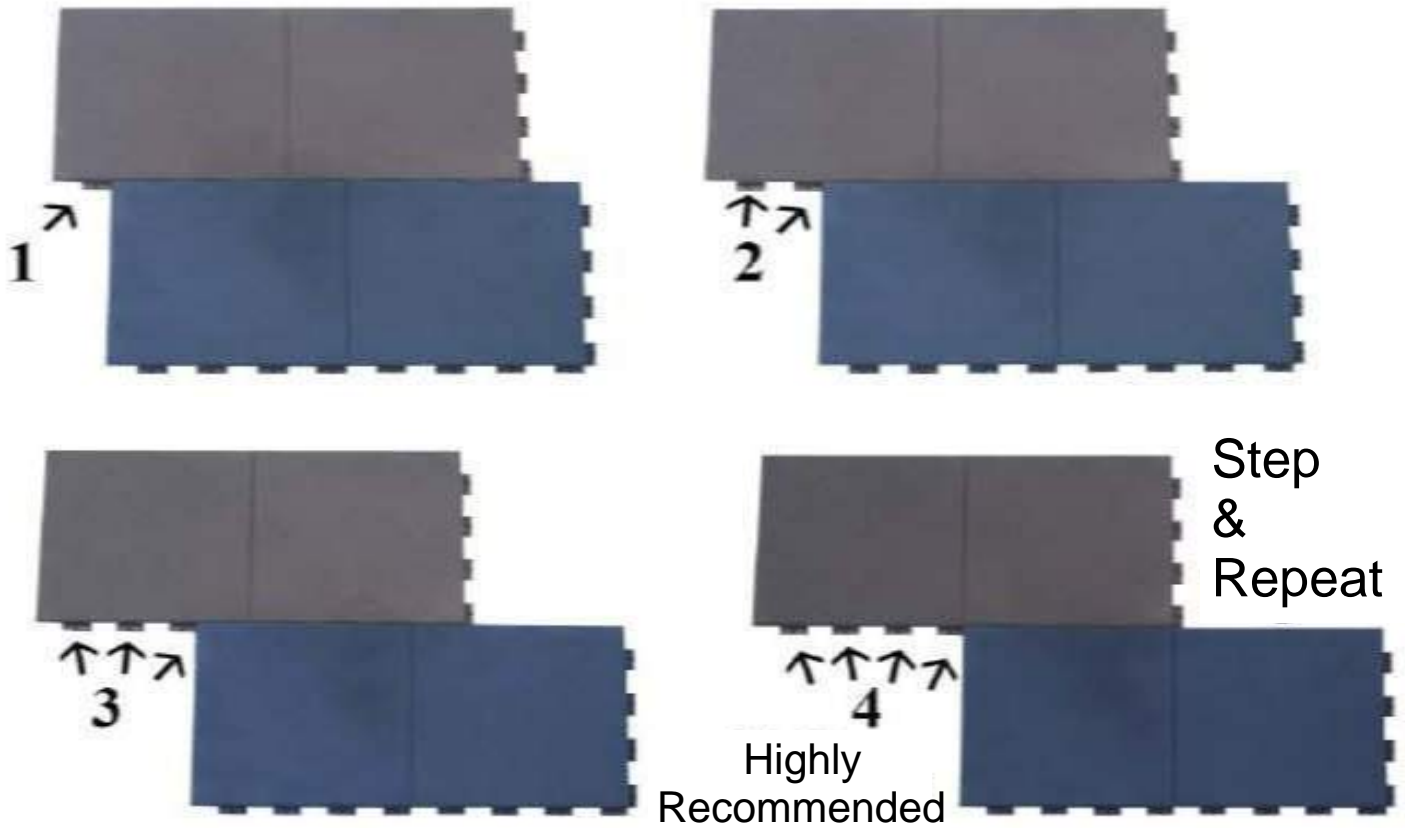


Adhesive Well



Patterns & Style Planning

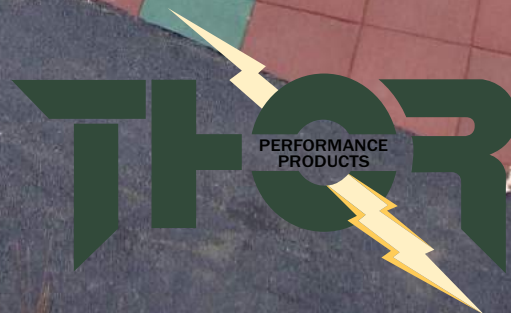
Our interlocking mechanisms are spaced at 1 3/4" intervals which allow for Thunder Play tiles to be installed in varying degrees of offset, and with the proper planning can even accomplish the visual of an arc when seen from above.



High-Risk Areas

In areas with a high risk of vandalism, in addition to gluing the interlocking mechanisms of our Thunder Play tiles, each joint is equipped with a slot so that if necessary, each tile can be bolted down. This secures the tiles to the substrate to prevent the unauthorized removal of tiles.





800-348-5815 | INFO@THORPP.COM