

RUBBER FLOORING
IN PLANKS

NEOFLEX TAIPAN SERIES



Neoflex Taipan Series.

Neoflex™ Taipan Series is a 100% EPDM rubber floor covering made of polymerically bound synthetic rubber, which incorporates an advanced polyurethane coating technology.

Designed for use in indoor commercial settings, it exhibits excellent physical properties of EPDM rubber floors such as user comfort, flexibility, durability, sound insulation and step noise reduction.

Neoflex Rubber Flooring is globally recognized as a superior product of an ISO 9001 & ISO 14001 certified manufacturer of rubber flooring for 33 years.

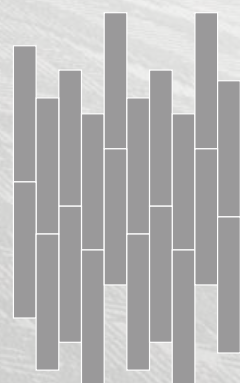




Color
488 DI06 TR07

Thickness
6 mm

Installation
Random

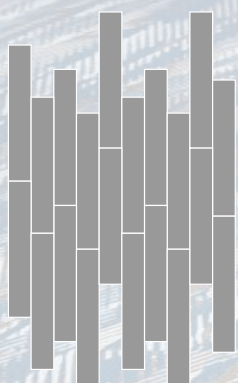




Color
488 DI05 TR20

Thickness
6 mm

Installation
Random



Inspired by Nature.

Inspired by Australasia's large, fast moving snake, Neoflex Taipan Series showcases exquisite color combinations across its 44 colorways, giving the floor a unique presence that is both remarkable, and emotive.







Color
488 DI15 TR17

Thickness
2.5 mm

Installation
Random





Color
488 DI16 TR11

488 DI16 TR18

Thickness
6 mm

Installation
Herringbone





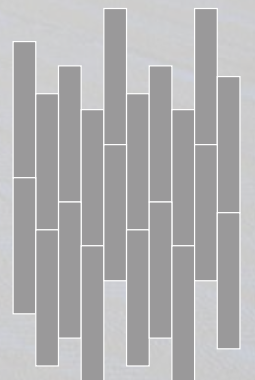




Colors
488 DI20 TR07

Thickness
2.5 mm

Installation
Random

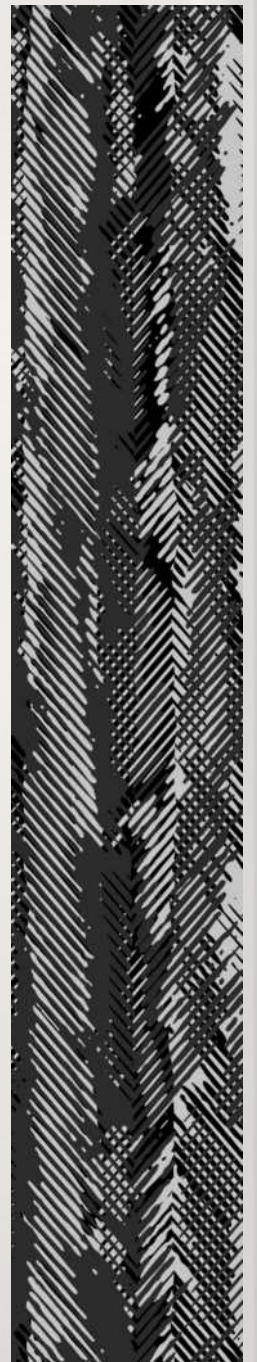


Fit for Purpose.

Neoflex Taipan Series is purpose-built to be durable, comfortable, slip and indent resistant, as well functional.

It does not dent or crack when subjected to impacts and at the same time reduces ambient noise, step noise, reverberation, noise transfer and vibration transfer creating a pleasant and restful environment.

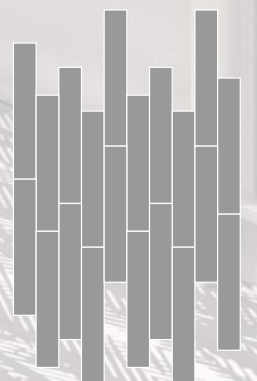




Color
488 DI05 TR07

Thickness
2.5 mm

Installation
Random





Colors

488 DI16 TR18

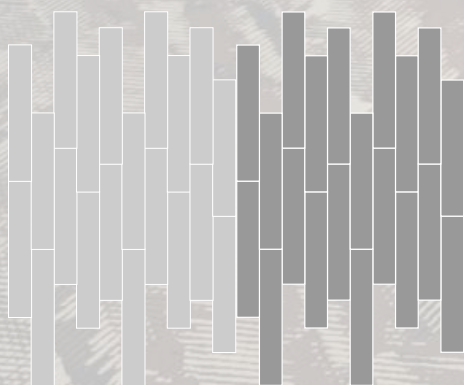
488 DI17 TR18

Thickness

6 mm

Installation

Random





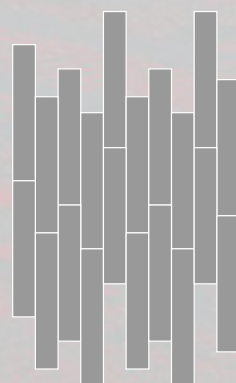




Color
488 DI04 TR07

Thickness
2.5 mm

Installation
Random

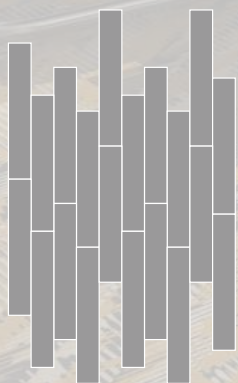




Color
488 DI18 TR07

Thickness
6 mm

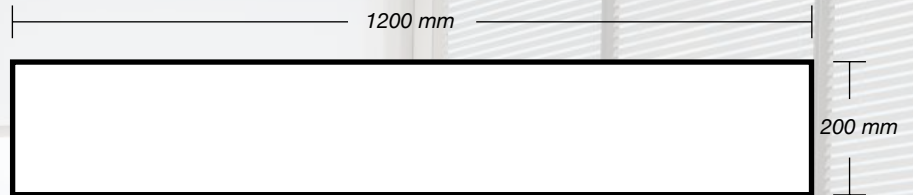
Installation
Random



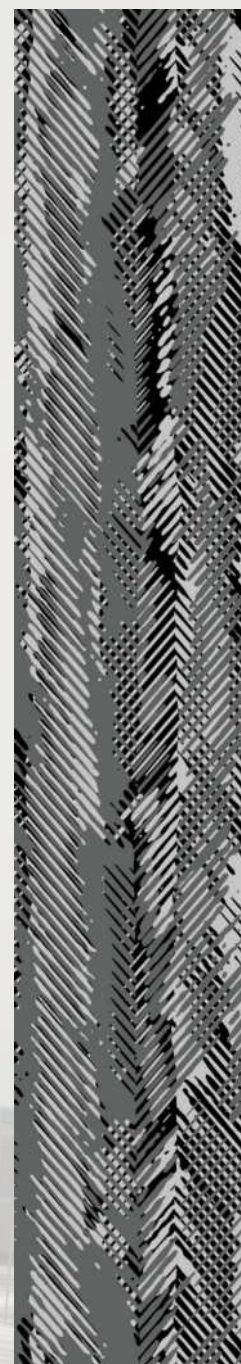
In A Unique Format.

Neoflex Taipan Series is supplied in 1200 mm x 200 mm modular planks.

With five unique planks, designed to be laid at random, a truly sophisticated floor can be created that avoids repetition.



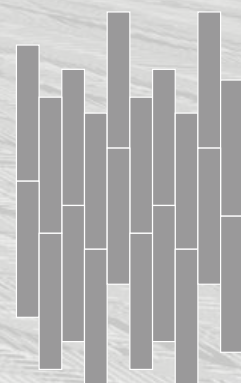


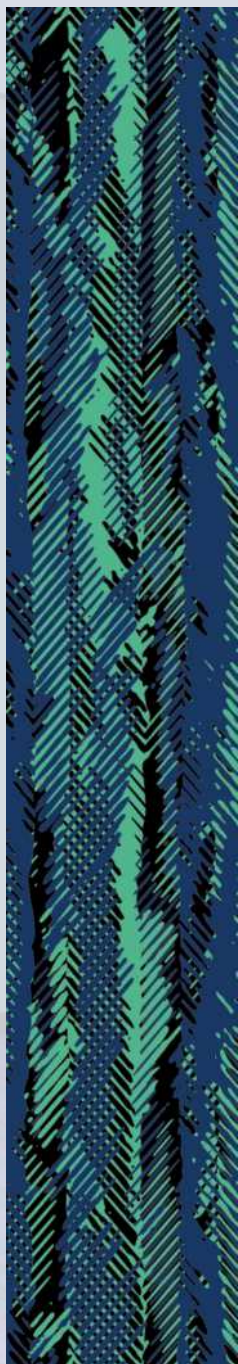


Color
488 DI05 TR06

Thickness
6 mm

Installation
Random





Colors

488 DI23 TR20

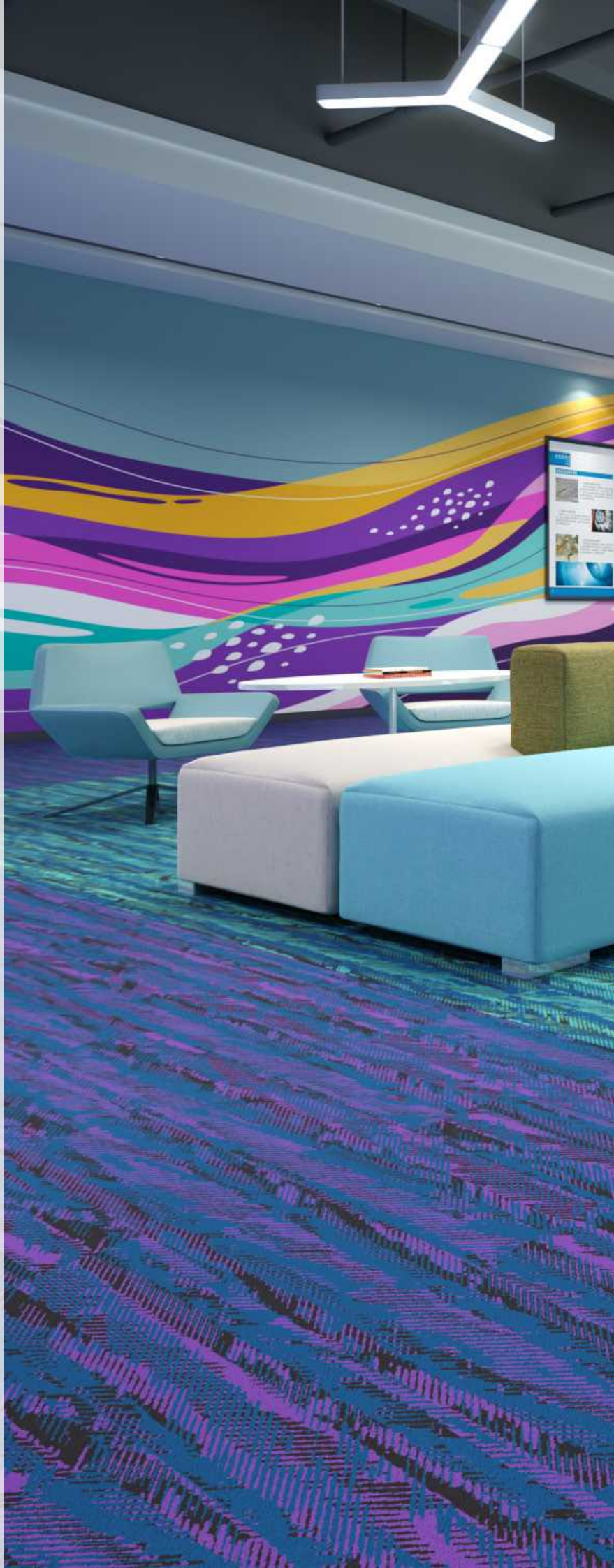
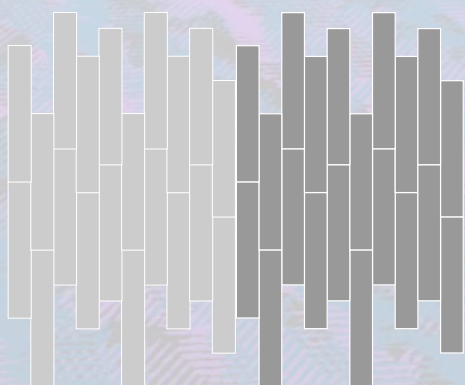
488 DI19 TR20

Thickness

2.5 mm

Installation

2-Color Random









Color
488 DI05 TR10

Thickness
10 mm

Installation
Random





Colors
488 DI15 TR06

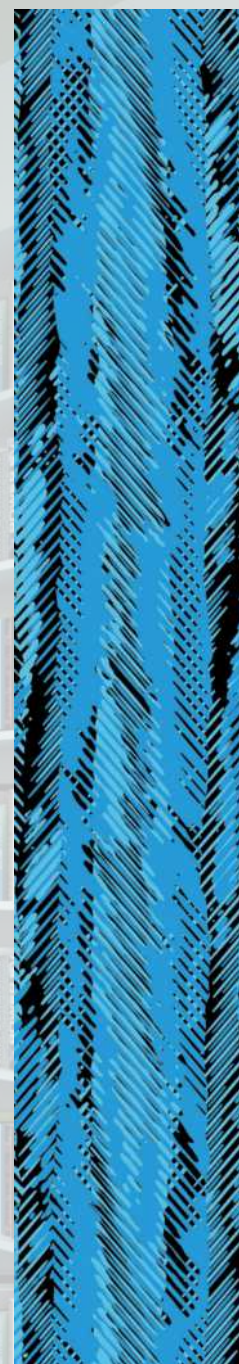
Thickness
6 mm

Installation
Random





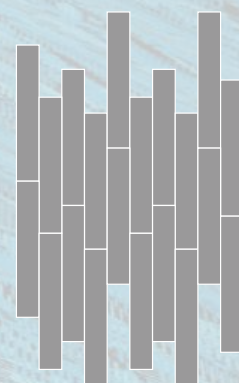




Color
488 DI22 TR09

Thickness
6 mm

Installation
Random

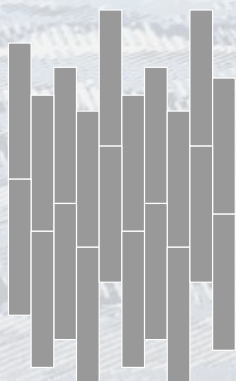




Color
488 DI16 TR06

Thickness
6 mm

Installation
Random





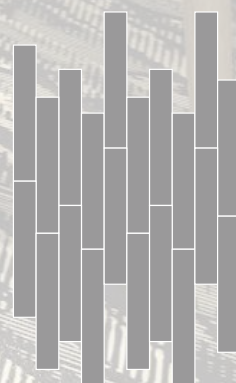




Color
488 D115 TR07

Thickness
2.5 mm

Installation
Random





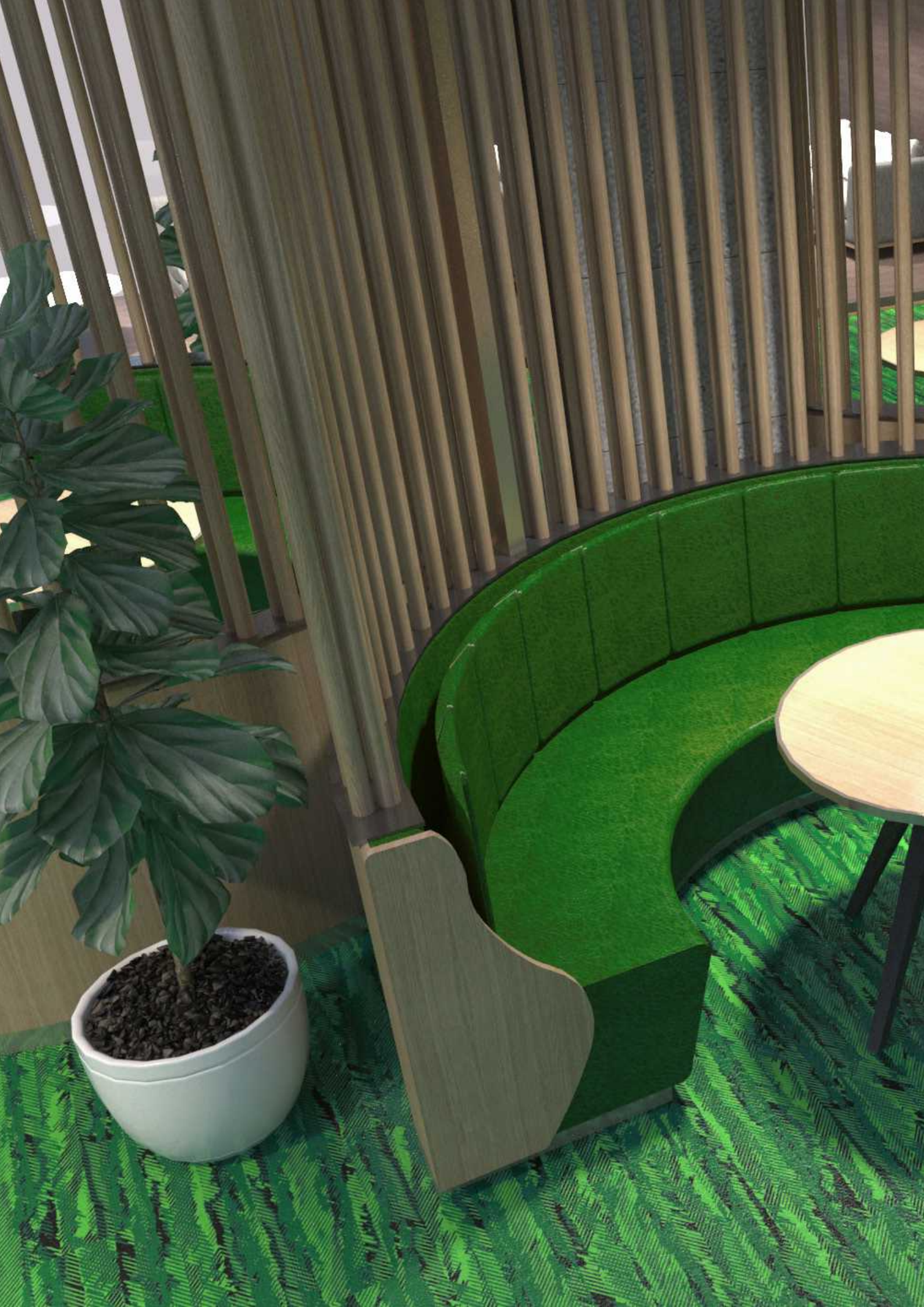
Colors
488 DI15 TR08

Thickness
2.5 mm

Installation
Random





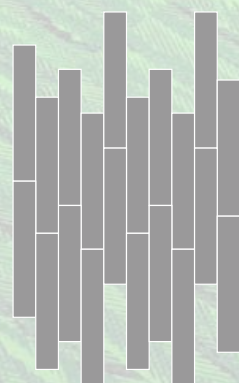




Color
488 DI10 TR11

Thickness
6 mm

Installation
Random



Standard Colors.

Neoflex Taipan Series is available in a wide variety of standard colorways that utilize two pattern colors printed over a black EPDM rubber base.

The below color swatches are meant to give you a first impression of colors and materials. Experience has shown, however, that printed versions of colors cannot in all cases faithfully reproduce the color appearance of the originals. We therefore recommend that you consult your Neoflex partner on your preferred color choices, who will be happy to show you original samples and assist you.



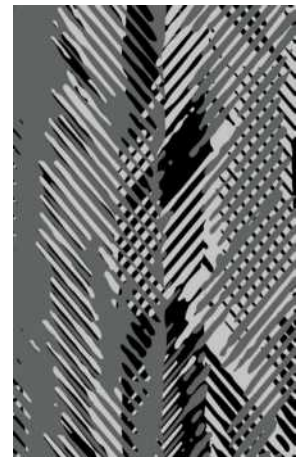
488 DI01 TR18



488 DI02 TR04



488 DI04 TR07



488 DI05 TR06



488 DI05 TR07



488 DI05 TR08



488 DI05 TR09



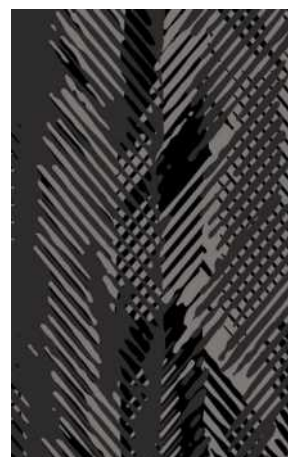
488 DI05 TR10



488 DI05 TR20



488 DI06 TR04



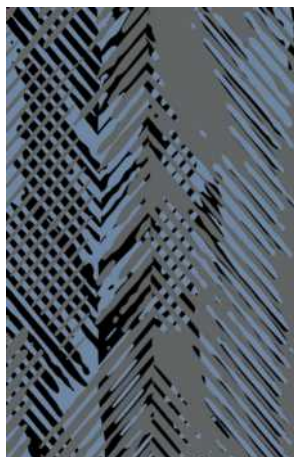
488 DI06 TR07



488 DI06 TR18



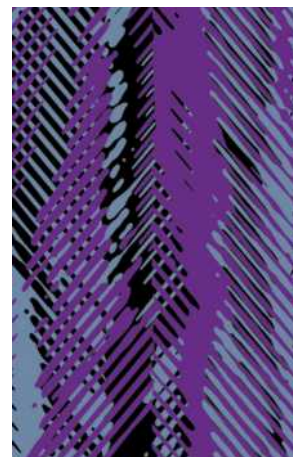
488 DI06 TR20



488 DI08 TR06



488 DI08 TR07



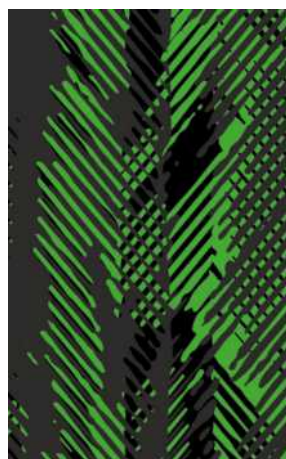
488 DI08 TR19



488 DI08 TR20



488 DI09 TR20



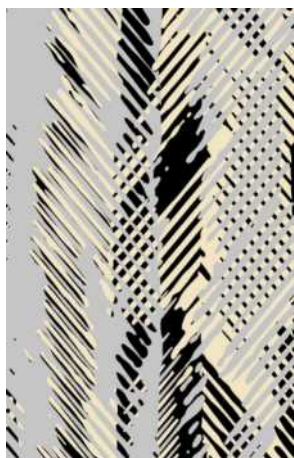
488 DI10 TR07



488 DI10 TR11



488 DI15 TR01



488 DI15 TR05



488 DI15 TR06



488 DI15 TR07



488 DI15 TR08



488 DI15 TR16



488 DI15 TR17



488 DI15 TR18



488 DI16 TR06



488 DI16 TR07



488 DI16 TR09



488 DI16 TR11



488 DI16 TR17



488 DI16 TR18



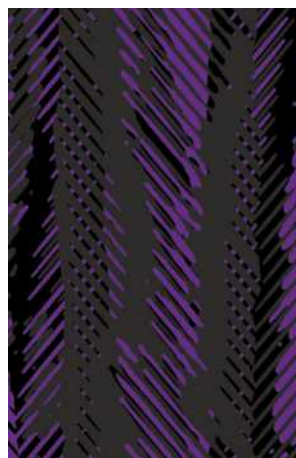
488 DI17 TR07



488 DI17 TR18



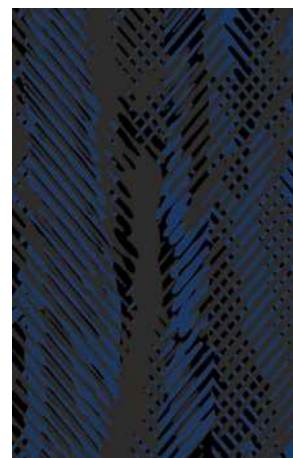
488 DI18 TR07



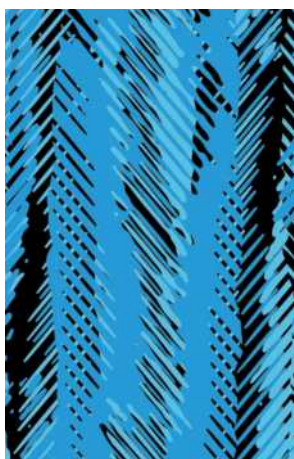
488 DI19 TR07



488 DI19 TR20



488 DI20 TR07



488 DI22 TR09



488 DI23 TR07



488 DI23 TR20

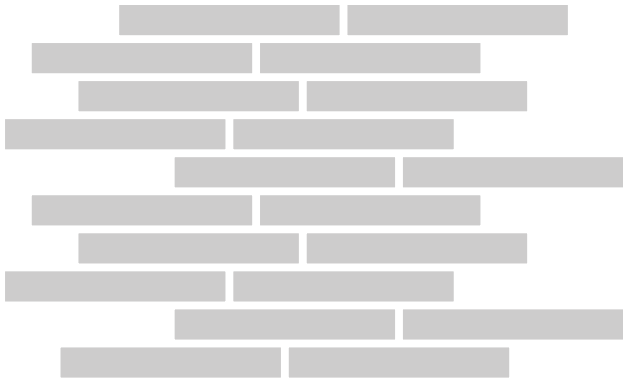


488 DI26 TR07

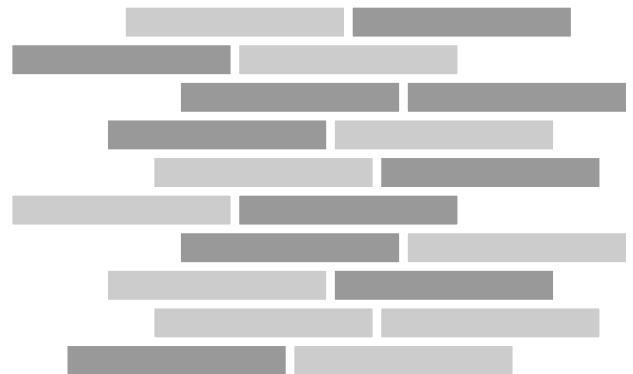
Installation Options.

Neoflex Taipan Series Flooring can be installed in a variety of different ways. Different colors can be combined to great effect.

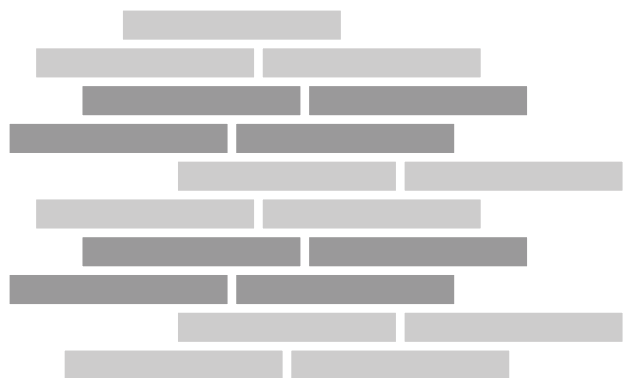
Random



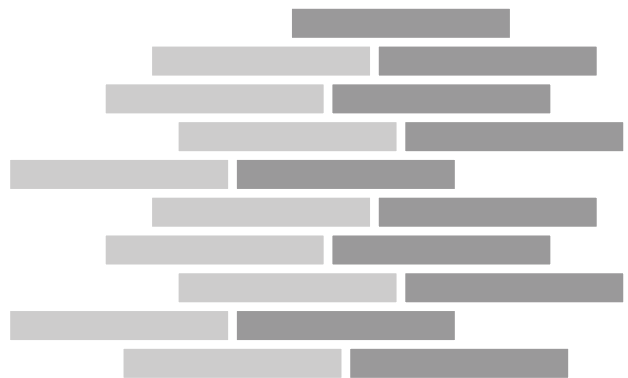
2-Color Random



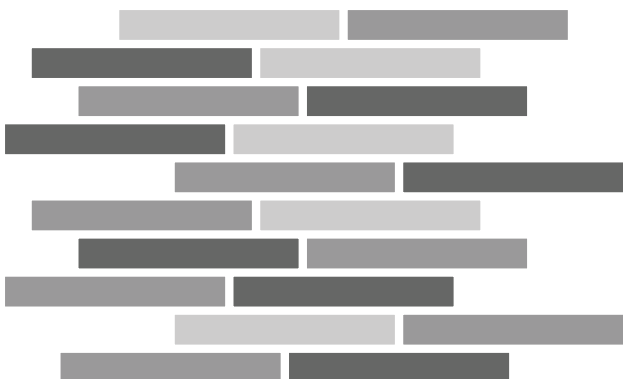
2-Color Random



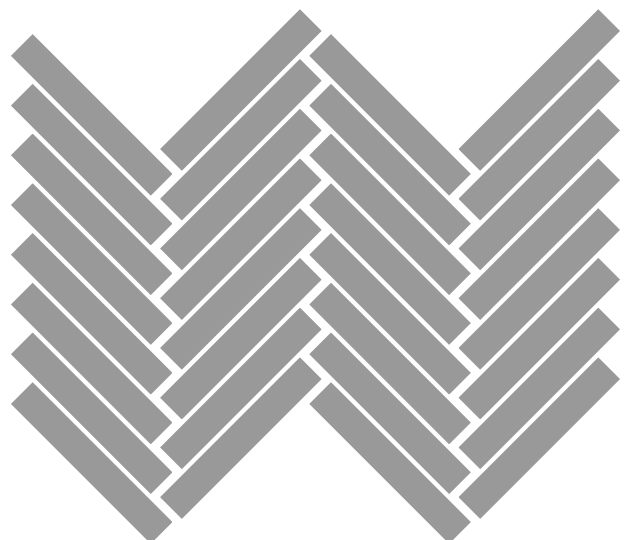
2-Color Random



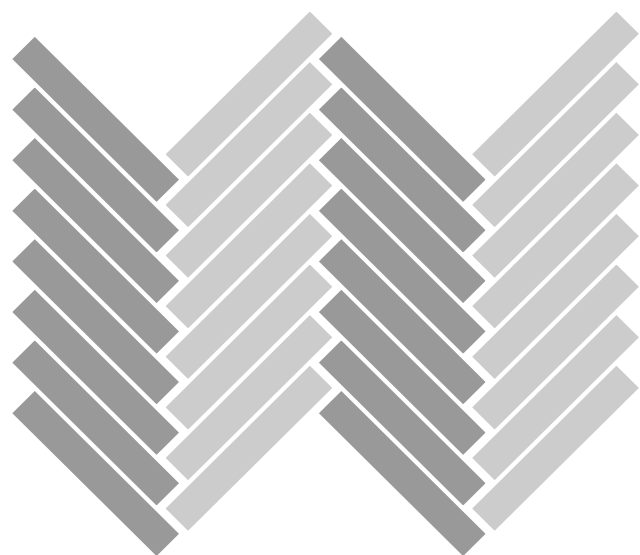
3-Color Random



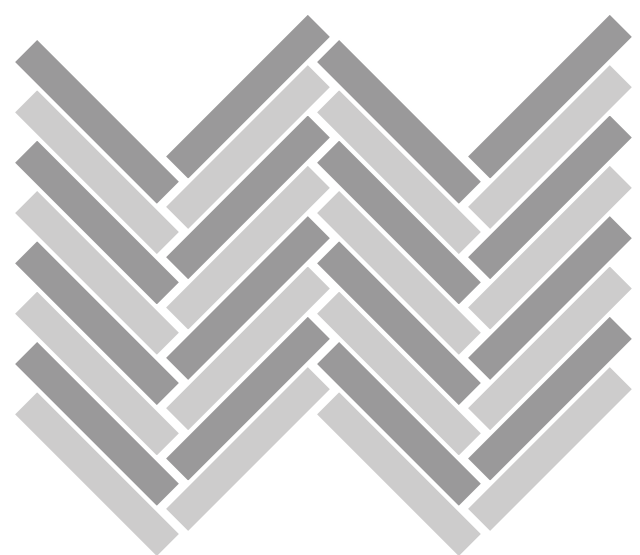
Herringbone



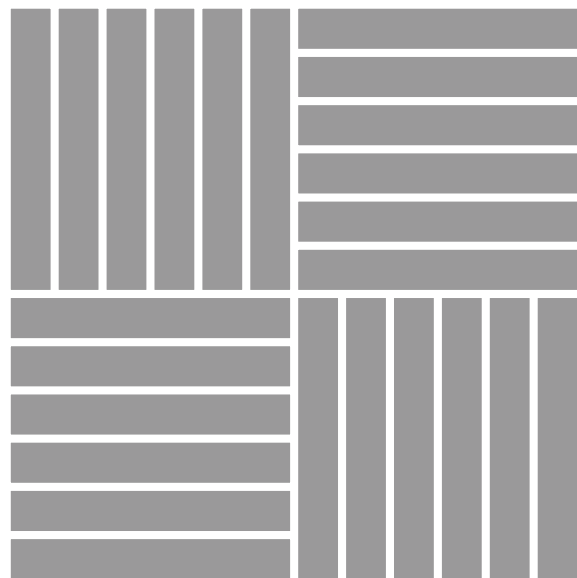
2-Color Herringbone



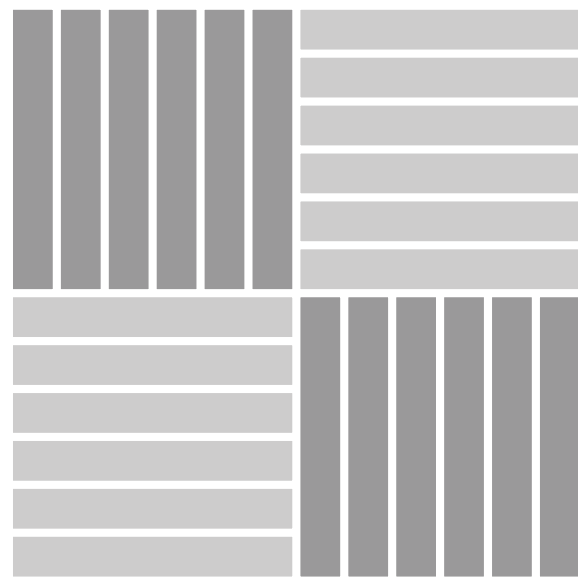
2-Color Herringbone



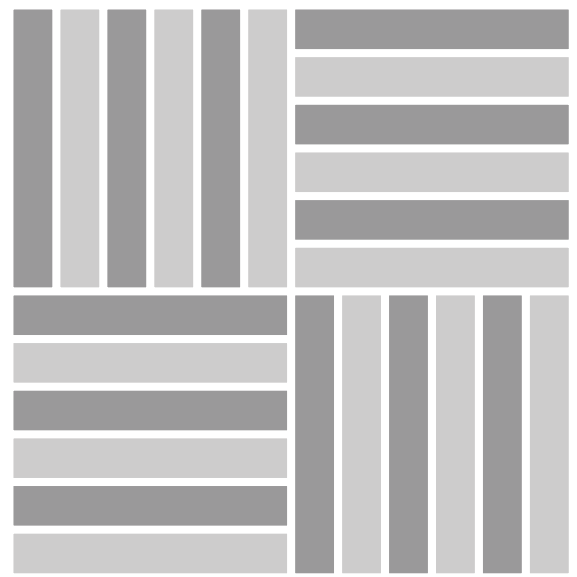
Checkerboard



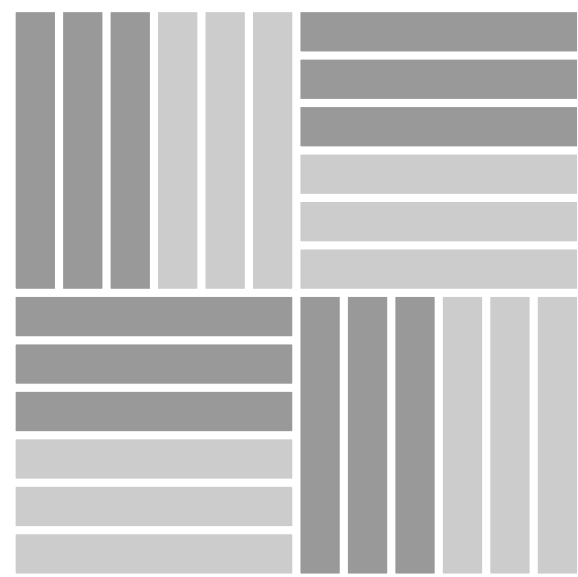
2-Color Checkerboard



2-Color Checkerboard



2-Color Checkerboard



Technical Specifications.

Neoflex Taipan Series is made of 100% synthetic EPDM rubber with a life expectancy of 10+ years backed by a 7-year limited warranty.

| Property | Standard | Result |
|-------------------------------------------|-----------------------|---------------------------------|
| Thickness | | 2.5 mm, 6 mm |
| Dimensions | | 1200 mm x 200 mm |
| Weight | | ± 4.65 kg/sqm |
| Hardness | ISO 7619-1:2010 | 62.1° Shore A |
| Determination of Flexibility & Deflection | ISO 24344:2012 | No cracking in either direction |
| Enhanced Slip Resistance | EN 13845:2005 Annex C | Moderate |
| Dynamic Coefficient of Friction | EN 13893:2012 | 0.7 |
| Light Fastness | ISO 105-B02:2013 | 7-8 Grade |
| Residual Indentation | ISO 24343-1:2002 | 0.18 mm |
| Dimensional Stability | ISO 23999:2012 | 0.5% |
| Flammability | EN 13501-1 | Efl (Optional Cfl-s1) |
| Installation | | Stikibak™ or Full-Bond |

Standard Thicknesses.

Neoflex Taipan Series is manufactured in 2 thicknesses, each designed to be used for different flooring applications.

All thicknesses utilize a 2.5mm EPDM top layer. 6mm thickness consists of a 2.5mm EPDM layer laminated to a recycled SBR rubber underlay.



If thicker product is required, rubber underlay can be supplied in rolls, and Neoflex Taipan Series can be adhered on top.





Limitless Potential.

Combining great ideas, cutting edge design, and an eye for functionality, Rephouse manufactures rubber flooring products in many varieties other than Neoflex Taipan Series.

Rephouse manufactures a complete range of commercial rubber flooring solutions. To find out more about these floors, contact your Neoflex partner who will be happy to advise.

Also, visit our website, or join us on social media, for the latest updates.



www.rephouse.com



info@rephouse.com



[@rephouse](https://www.facebook.com/rephouse)



[@rephouse](https://www.instagram.com/rephouse)

