

RUBBER FLOORING
IN PLANKS

NEOFLEX
TAIPAN
SERIES



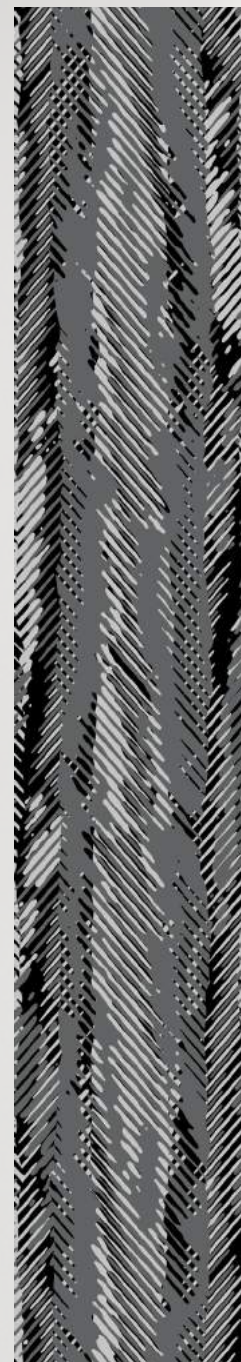
Neoflex Taipan Series.

Neoflex™ Taipan Series is a 100% EPDM rubber floor covering made of polymerically bound synthetic rubber, which incorporates an advanced polyurethane coating technology.

Designed for use in indoor fitness and leisure settings, it exhibits excellent physical properties of EPDM rubber floors such as user comfort, flexibility, durability, sound insulation and step noise reduction.

Neoflex Fitness Flooring is globally recognized as a superior product of an ISO 9001 & ISO 14001 certified manufacturer of rubber flooring for 33 years.

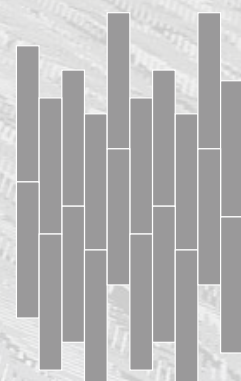




Color
488 DI05 TR06

Thickness
6 mm

Installation
Random

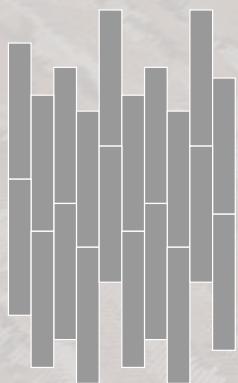




Color
488 DI06 TR18

Thickness
8 mm

Installation
Random



Inspired by Nature.

Inspired by Australasia's large, fast moving snake, Neoflex Taipan Series showcases exquisite color combinations across its 44 colorways, giving the floor a unique presence that is both remarkable, and emotive.







Color
488 DI05 TR08

Thickness
8 mm

Installation
Random





Color
488 DI18 TR07

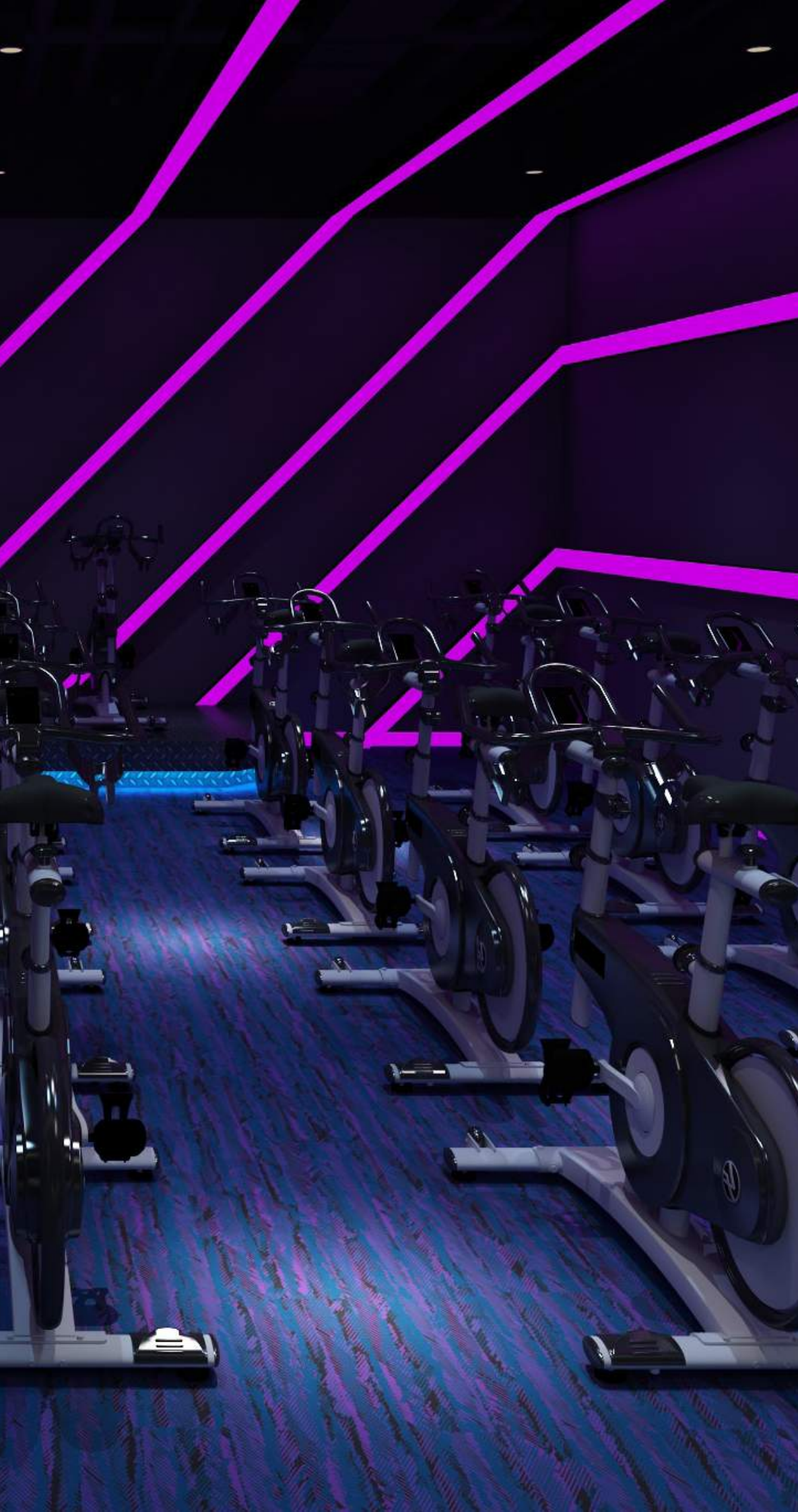
Thickness
10 mm

Installation
Herringbone





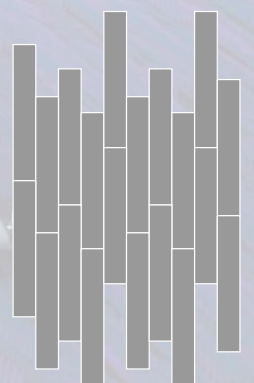




Colors
488 D119 TR20

Thickness
2.5 mm

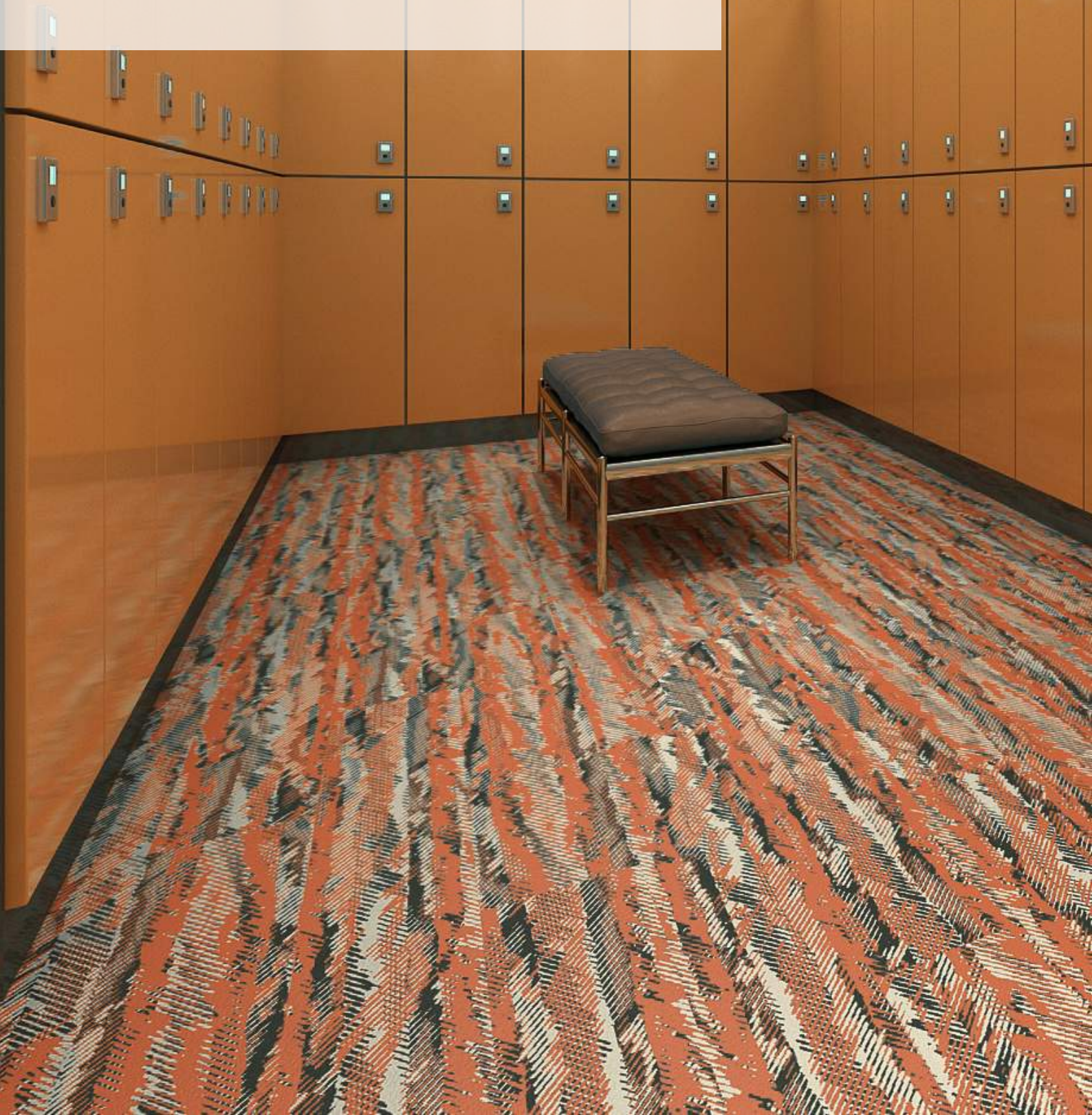
Installation
Random



Fit for Purpose.

Neoflex Taipan Series Fitness Flooring is purpose-built to be durable, comfortable, slip and indent resistant, as well functional.

It does not dent or crack when subjected to impacts by free-weights or kettle-bells and at the same time reduces ambient noise, step noise, reverberation, noise transfer and vibration transfer creating a pleasant and restful environment.

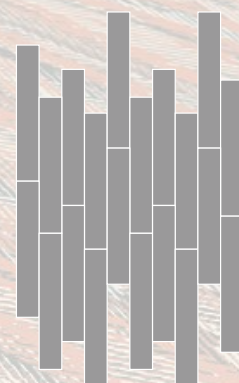




Color
488 DI15 TR01

Thickness
2.5 mm

Installation
Random





Colors

488 DI09 TR20

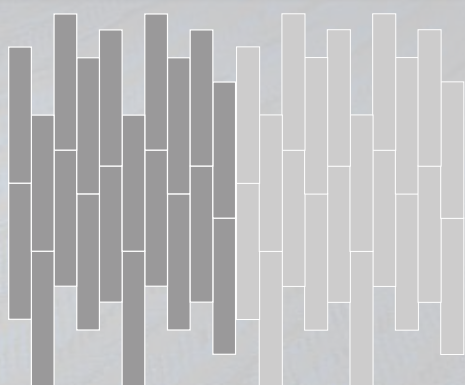
488 DI20 TR07

Thickness

8 mm

Installation

Random





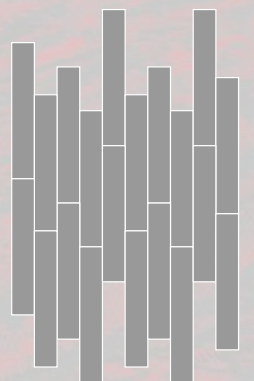




Color
488 DI04 TR07

Thickness
10 mm

Installation
Random

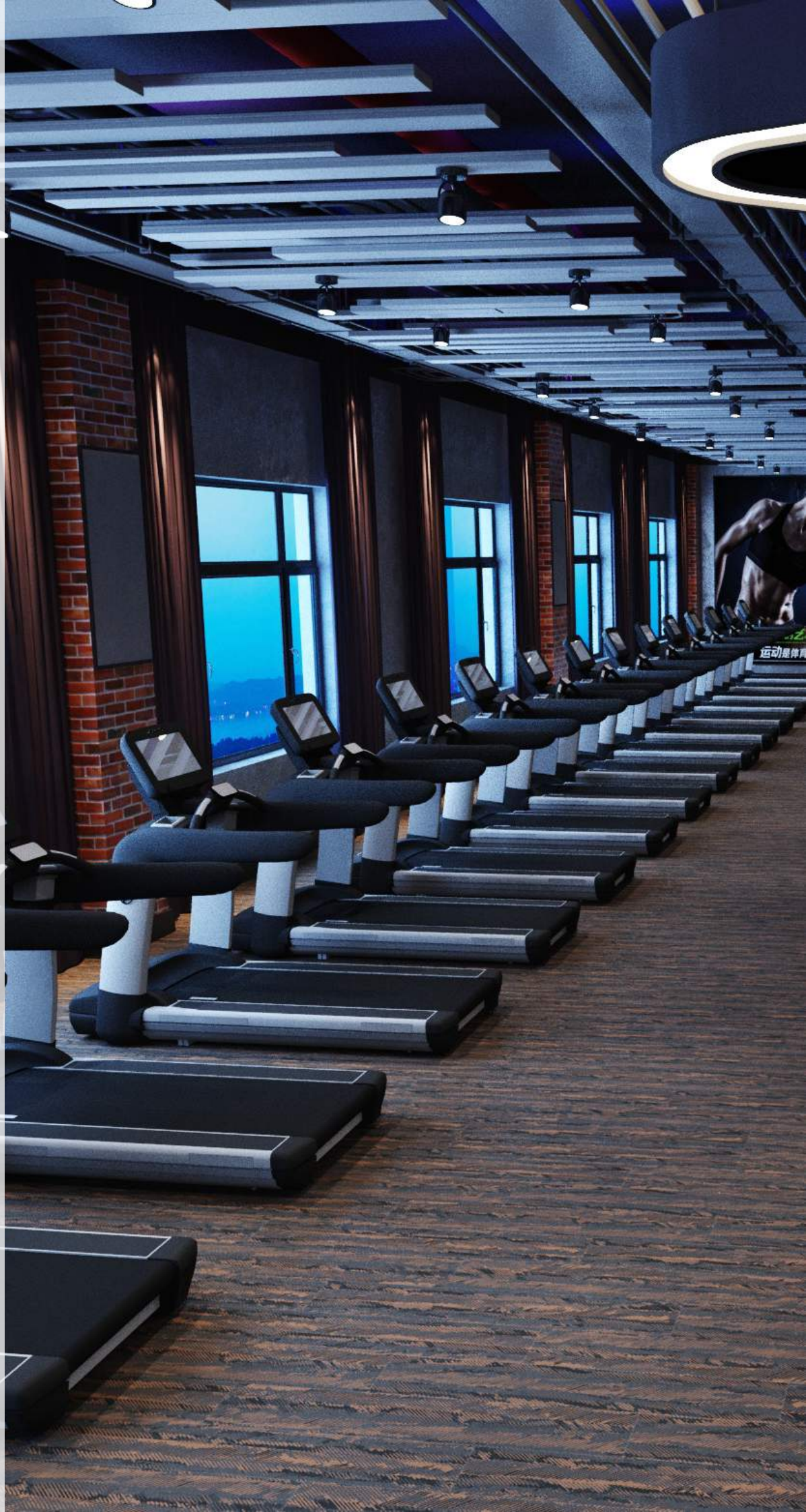
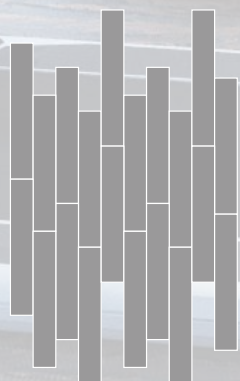




Color
488 DI18 TR07

Thickness
6 mm

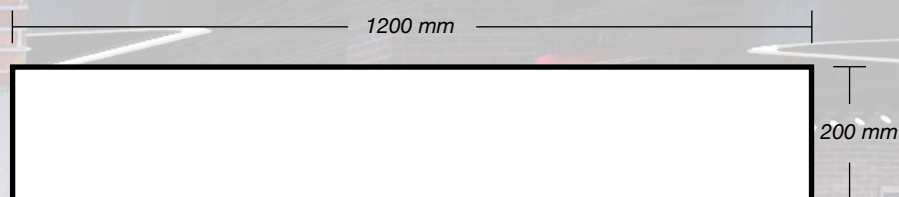
Installation
Random



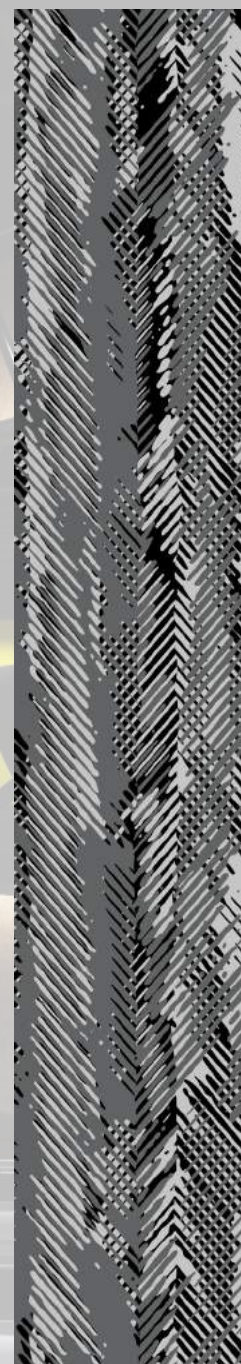
In A Unique Format.

Neoflex Taipan Series is supplied in 1200 mm x 200 mm modular planks.

With five unique planks, designed to be laid at random, a truly sophisticated floor can be created that avoids repetition.







Color
488 DI05 TR06

Thickness
6 mm

Installation
Random





Colors

488 DI05 TR20

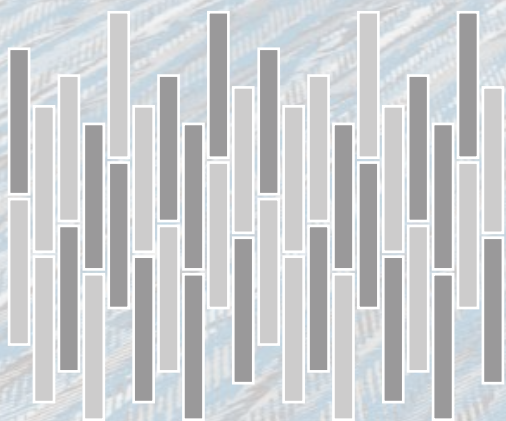
488 DI06 TR20

Thickness

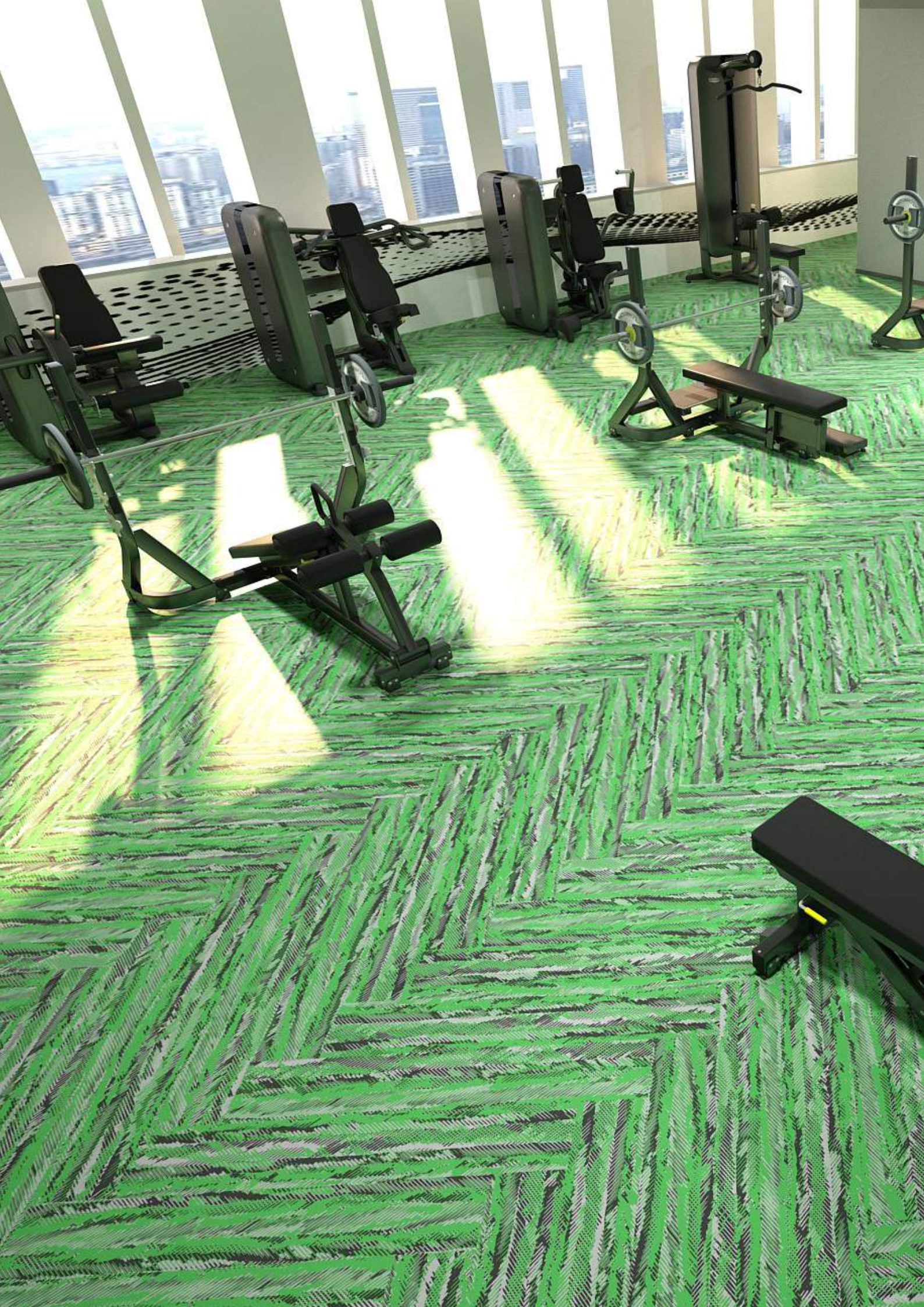
10 mm

Installation

2-Color Random









Color
488 DI05 TR10

Thickness
10 mm

Installation
Random

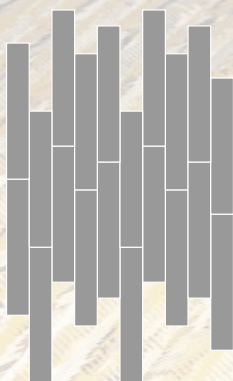




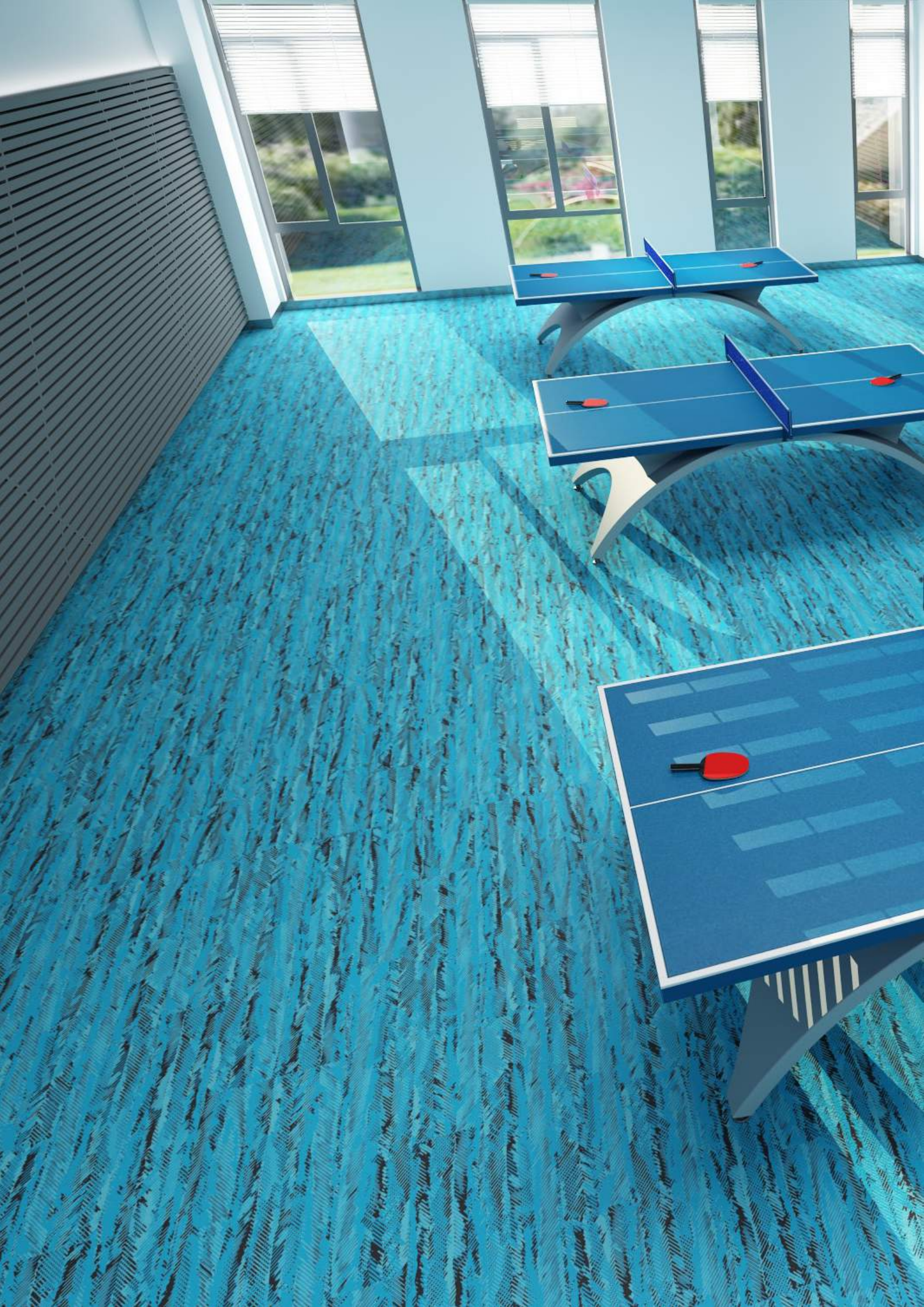
Colors
488 DI15 TR17

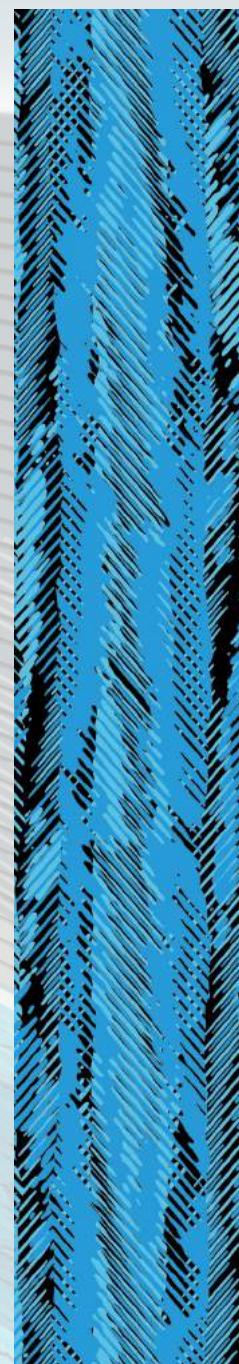
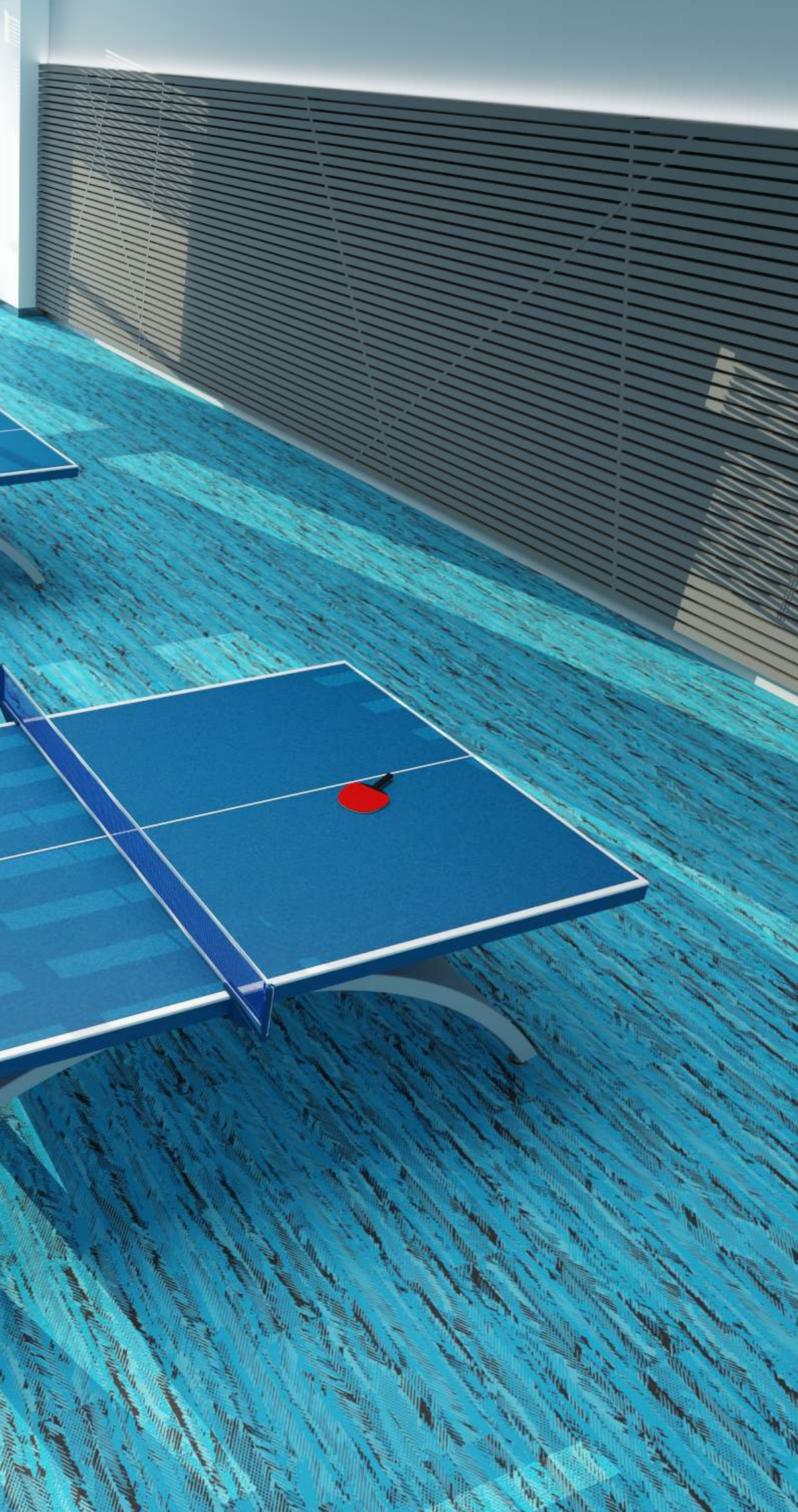
Thickness
8 mm

Installation
Random





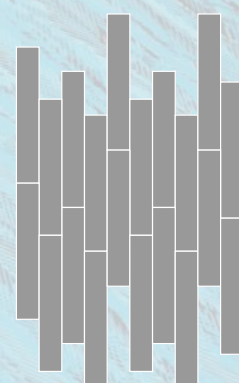


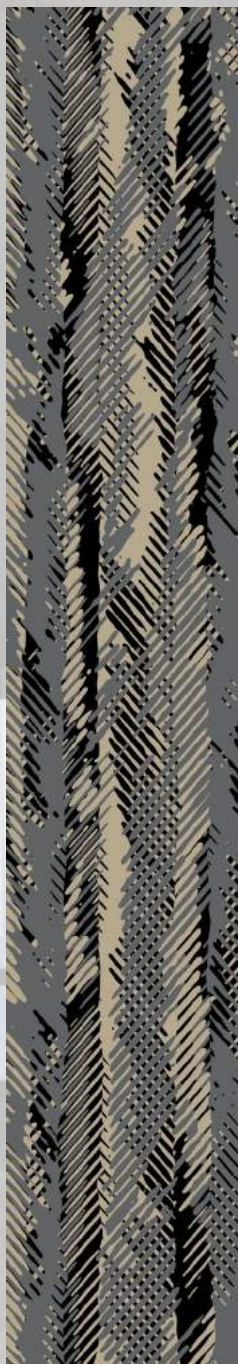


Color
488 DI22 TR09

Thickness
6 mm

Installation
Random

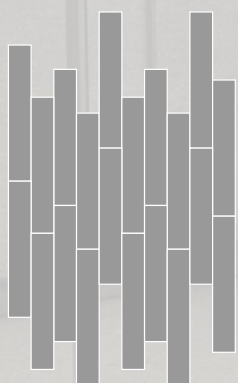




Color
488 DI16 TR06

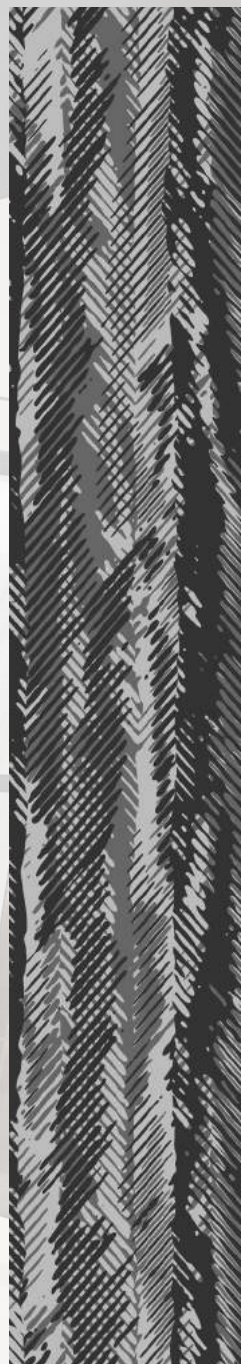
Thickness
10 mm

Installation
Random









Color
488 DI06 TR07

Thickness
10 mm

Installation
Random

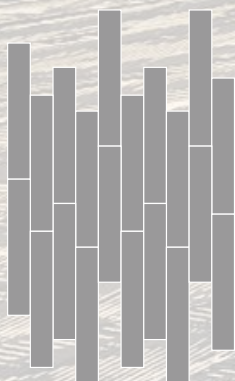




Colors
488 MV18 MV07

Thickness
2.5 mm

Installation
Random





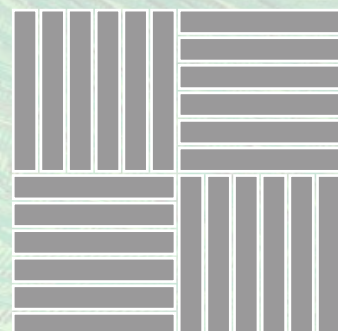




Color
488 DI10 TR11

Thickness
10 mm

Installation
Random



Standard Colors.

Neoflex Taipan Series is available in a wide variety of standard colorways that utilize two pattern colors printed over a black EPDM rubber base.

The below color swatches are meant to give you a first impression of colors and materials. Experience has shown, however, that printed versions of colors cannot in all cases faithfully reproduce the color appearance of the originals. We therefore recommend that you consult your Neoflex partner on your preferred color choices, who will be happy to show you original samples and assist you.



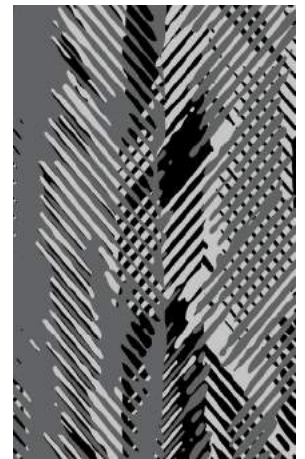
488 DI01 TR18



488 DI02 TR04



488 DI04 TR07



488 DI05 TR06



488 DI05 TR07



488 DI05 TR08



488 DI05 TR09



488 DI05 TR10



488 DI05 TR20



488 DI06 TR04



488 DI06 TR07



488 DI06 TR18



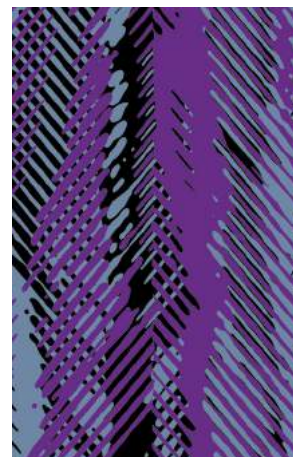
488 DI06 TR20



488 DI08 TR06



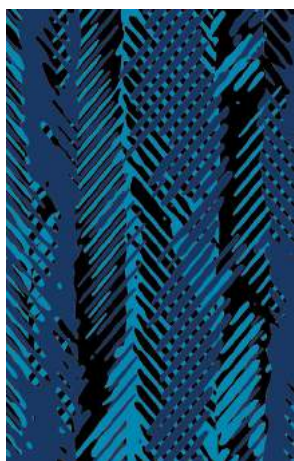
488 DI08 TR07



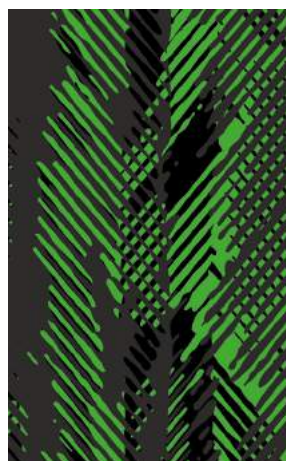
488 DI08 TR19



488 DI08 TR20



488 DI09 TR20



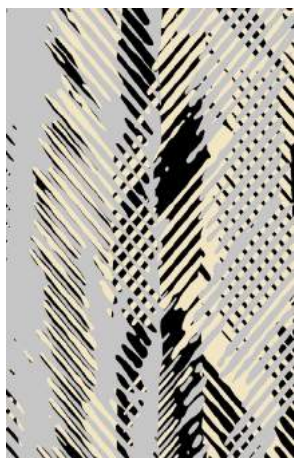
488 DI10 TR07



488 DI10 TR11



488 DI15 TR01



488 DI15 TR05



488 DI15 TR06



488 DI15 TR07



488 DI15 TR08



488 DI15 TR16



488 DI15 TR17



488 DI15 TR18



488 DI16 TR06



488 DI16 TR07



488 DI16 TR09



488 DI16 TR11



488 DI16 TR17



488 DI16 TR18



488 DI17 TR07



488 DI17 TR18



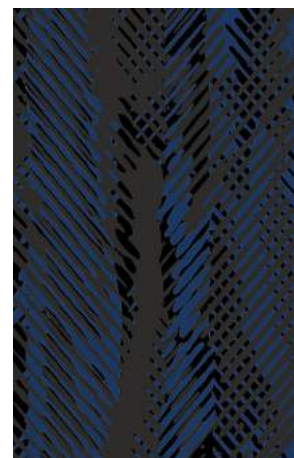
488 DI18 TR07



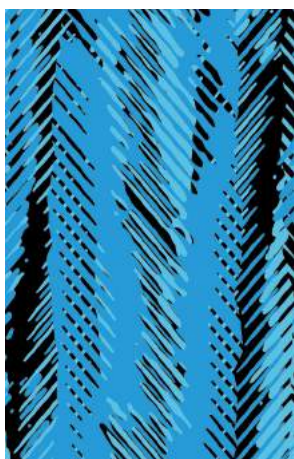
488 DI19 TR07



488 DI19 TR20



488 DI20 TR07



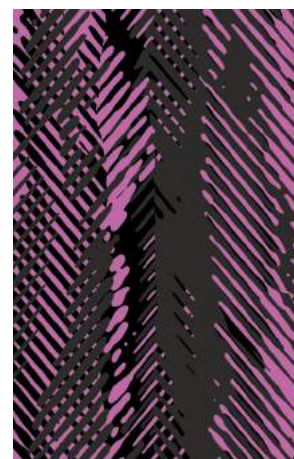
488 DI22 TR09



488 DI23 TR07



488 DI23 TR20

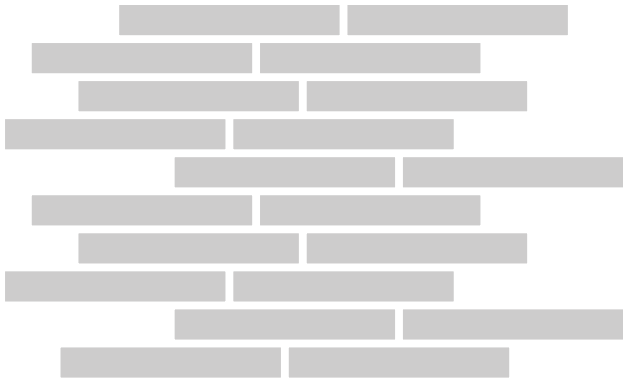


488 DI26 TR07

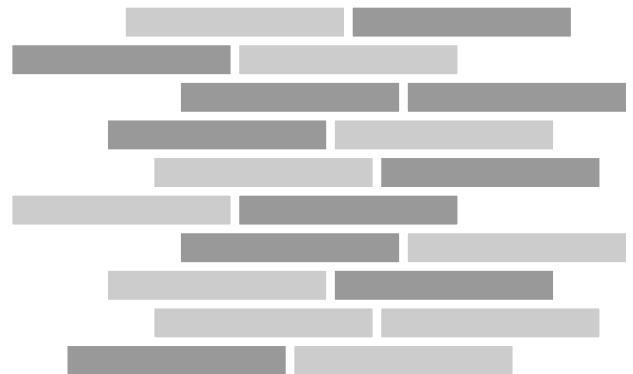
Installation Options.

Neoflex Taipan Series Flooring can be installed in a variety of different ways. Different colors can be combined to great effect.

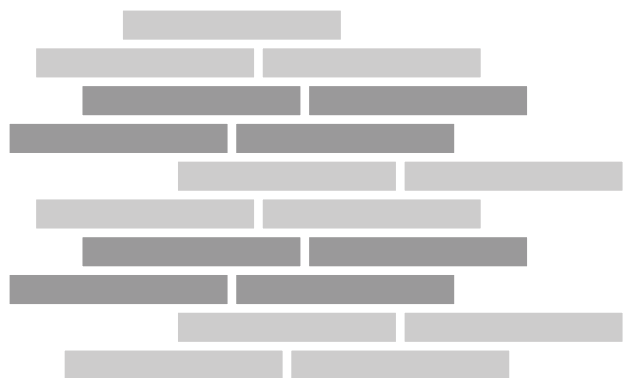
Random



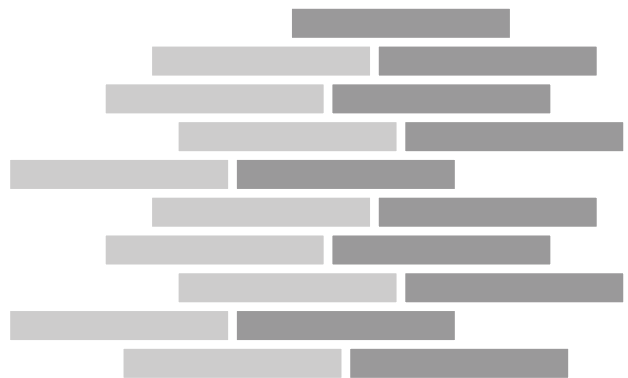
2-Color Random



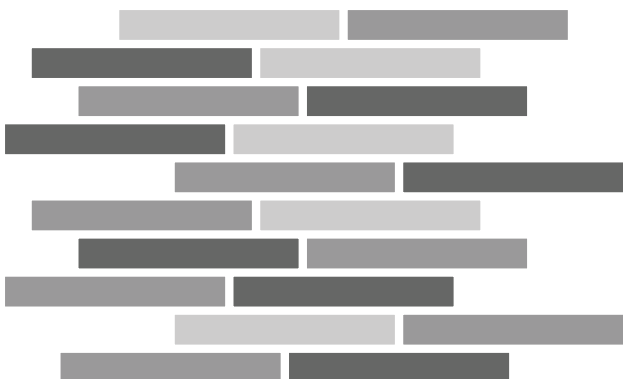
2-Color Random



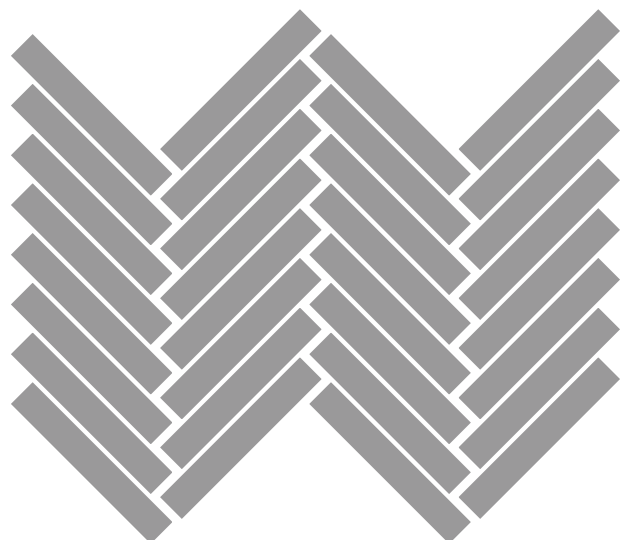
2-Color Random



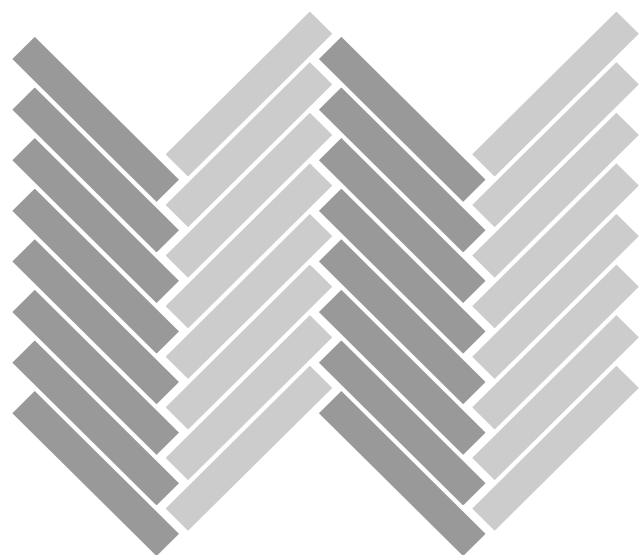
3-Color Random



Herringbone



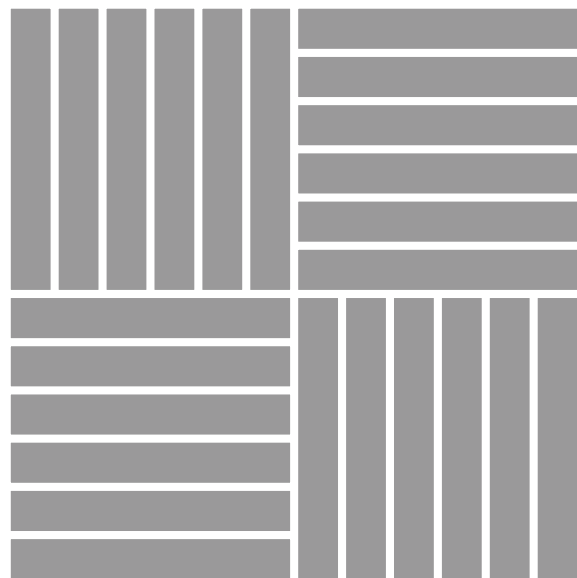
2-Color Herringbone



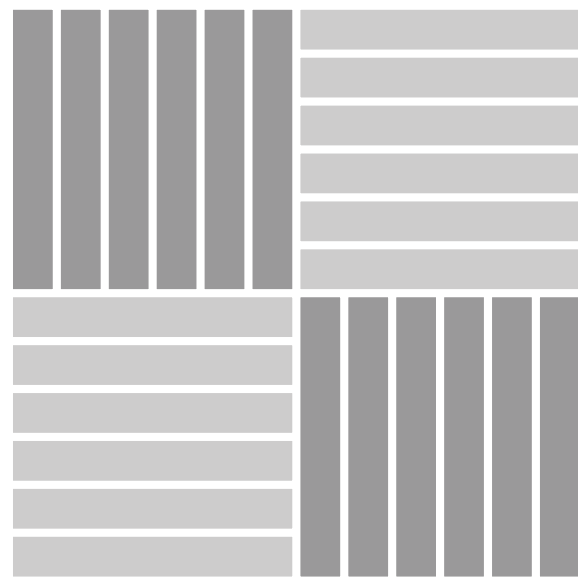
2-Color Herringbone



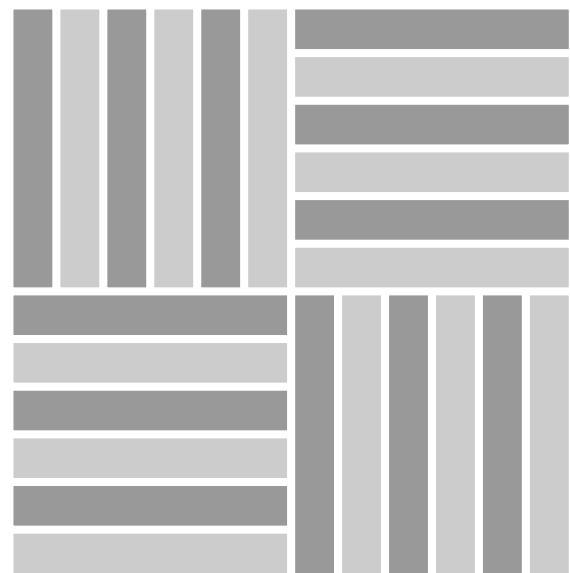
Checkerboard



2-Color Checkerboard



2-Color Checkerboard



2-Color Checkerboard



Technical Specifications.

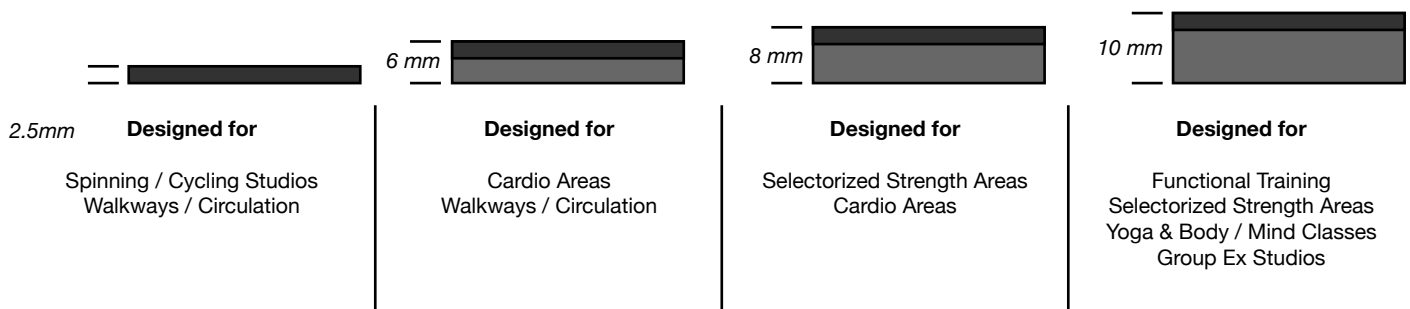
Neoflex Taipan Fitness Flooring is made of 100% synthetic EPDM rubber with a life expectancy of 10+ years backed by a 7-year limited guarantee. Its performance surpasses other types of rubber flooring as well as resilient vinyl, PVC, hardwood, laminated wood or EVA foam.

Property	Standard	Result
Thickness		2.5 mm, 6 mm, 8 mm, 10 mm
Dimensions		1200 mm x 200 mm
Weight		± 4.65 kg/sqm
Hardness	ISO 7619-1:2010	62.1° Shore A
Determination of Flexibility & Deflection	ISO 24344:2012	No cracking in either direction
Enhanced Slip Resistance	EN 13845:2005 Annex C	Moderate
Dynamic Coefficient of Friction	EN 13893:2012	0.7
Light Fastness	ISO 105-B02:2013	7-8 Grade
Residual Indentation	ISO 24343-1:2002	0.18 mm
Dimensional Stability	ISO 23999:2012	0.5%
Flammability	EN 13501-1	Efl (Optional Cfl-s1)
Installation		Stikibak™ or Full-Bond

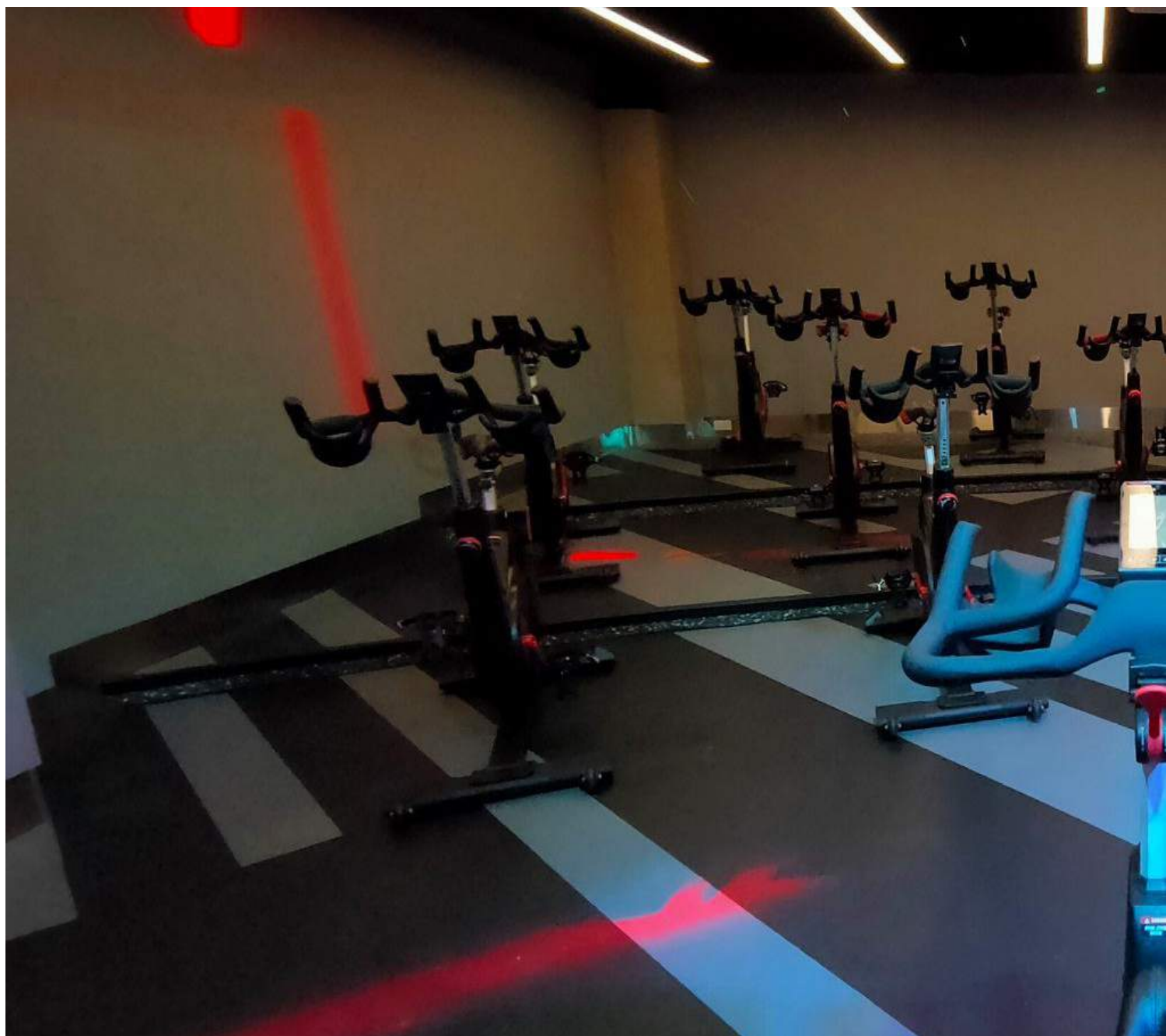
Standard Thicknesses.

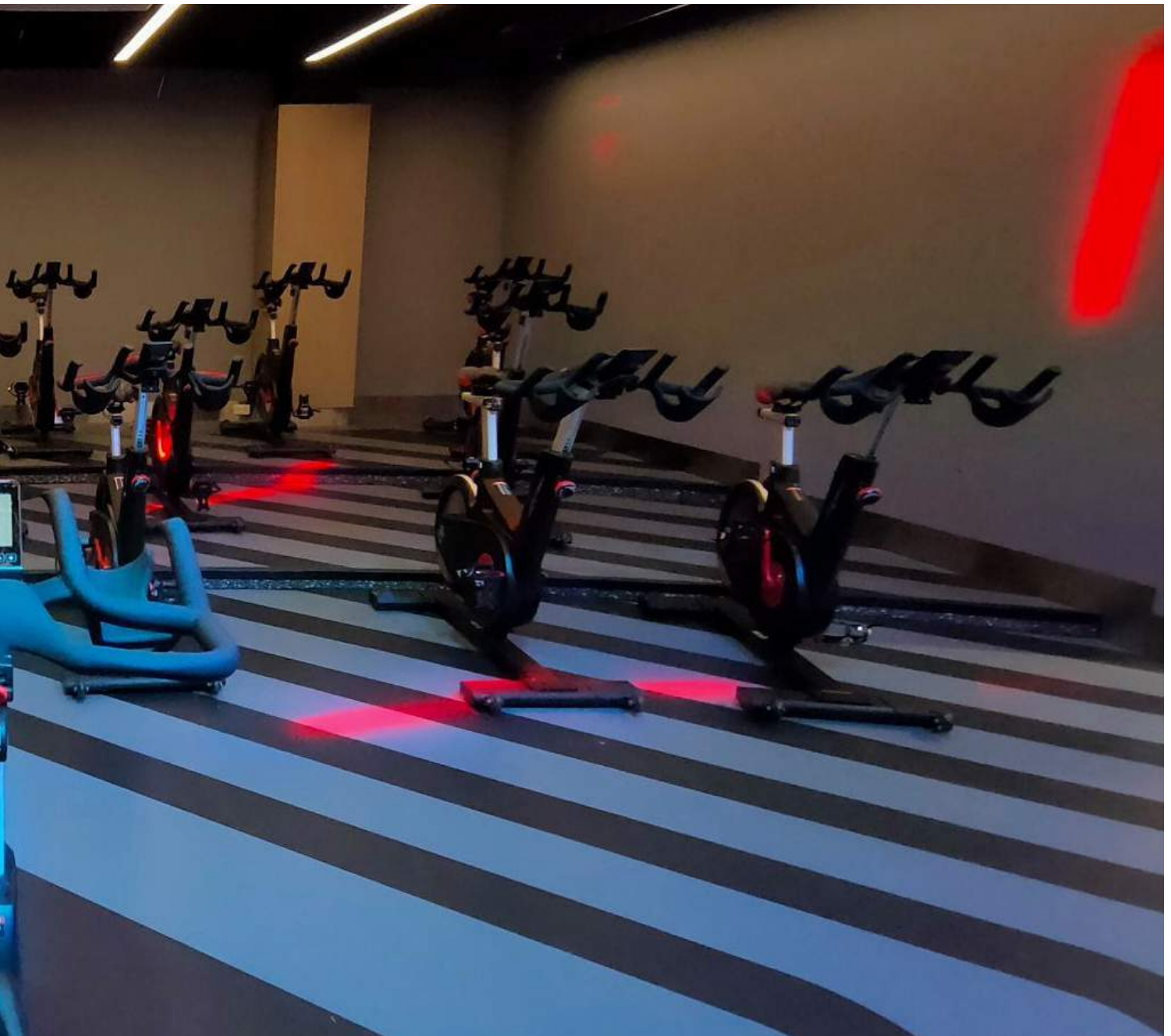
Neoflex Taipan Series is manufactured in 4 thicknesses, each designed to be used for different fitness flooring applications.

All thicknesses utilize a 2.5mm EPDM top layer. 6mm, 8mm and 10mm thicknesses consist of a 2.5mm EPDM layer laminated to a recycled SBR rubber underlay.



If thicker product is required, rubber underlay can be supplied in rolls, and Neoflex Taipan Series can be adhered on top.





Limitless Potential.

Combining great ideas, cutting edge design, and an eye for functionality, Rephouse manufactures rubber flooring products in many varieties other than Neoflex Taipan Series.

Rephouse manufactures a complete range of Fitness Flooring solutions. To find out more about these floors, contact your Neoflex partner who will be happy to advise.

Also, visit our website, or join us on social media, for the latest updates.



www.rephouse.com



info@rephouse.com



[@rephouse](https://www.facebook.com/rephouse)



[@rephouse](https://www.instagram.com/rephouse)

