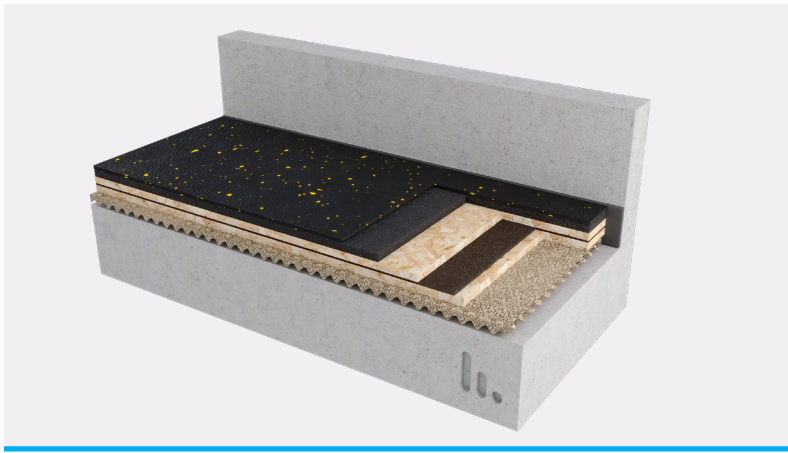


## Stravigym SP\*

### Datasheet



Stravigym SP is our “Standard Performance” gym system. It is a continuous support floating floor that provides great performances in the reduction of low-impact sound while offering a high level of comfort for any type of training.

Stravigym SP is a low-profile solution, ideally suited for areas with restricted additional floor build-up.

Its compatible with most conventional floor coverings and so selection of the final flooring can be made independent on the acoustic solution.



#### CHARACTERISTICS

- A variety of load distribution components can be used, such as plywood or OSB board
- Two types of absorption layers are available: continuous mats (Stravigym GympactLayer-20\*\* & Stravigym GympactLayer-45\*\*\*) and tiles (Stravigym Gympact Tile\*\*\*\* (-30, -50 and -70))
- Floor covering is not included in standard Stravigym solutions but a Stravigym GympactFloor products are available upon request
- Stravigym systems are compatible with almost all types of gym floor covering (please check with CDM Stravitec & floor manufacturer prior to installation)
- Stravigym SP is a lightweight floating floor options with reduced/minimal overall thickness (low additional height and weight)
- Stravigym SP is quick and easy to install
- If required, Stravigym SP can easily be dismantled and reinstalled

\*Previously known as CDM-GYM-SP  
\*\*Previously known as GYMFACT20  
\*\*\*Previously known as GYMFACT45  
\*\*\*\*Previously known as GYMFACT-Tile



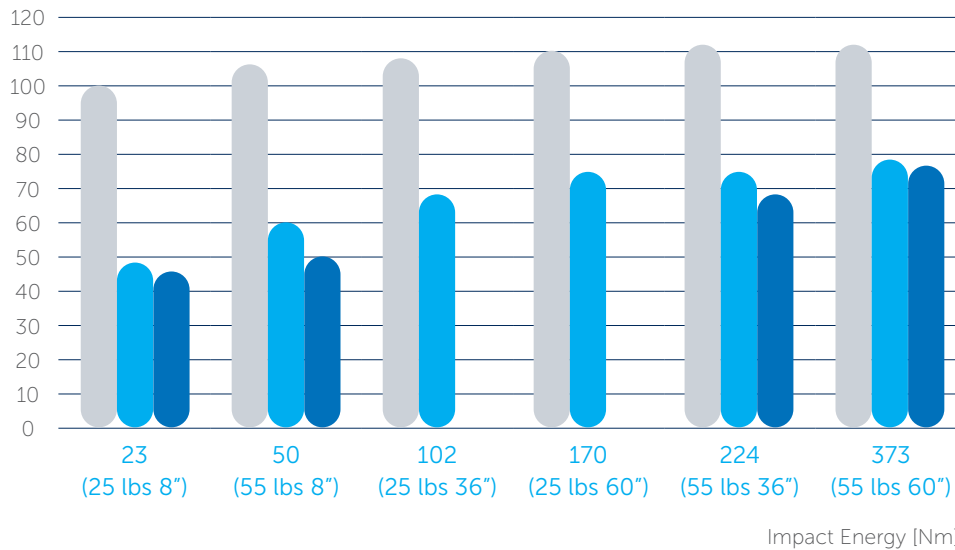
### Drop-Weight Tests

#### Test Report Riverbank AN17-010\* and AN19-005\* - Test Setups

- 9.5 mm (3/8") Stravigym Gympact Floor-R
- Stravigym GympactLayer-20 or Stravigym GympactLayer-45
- Plywood 19 mm (3/4")
- Damping Layer (1 layer)
- Plywood 19 mm (3/4")
- Stravigym Mat-W<sub>x</sub>
- Concrete slab 200 mm (8")

#### Overall Noise Level

L<sub>A,F,MAX</sub> [dBA ref 20µPa]



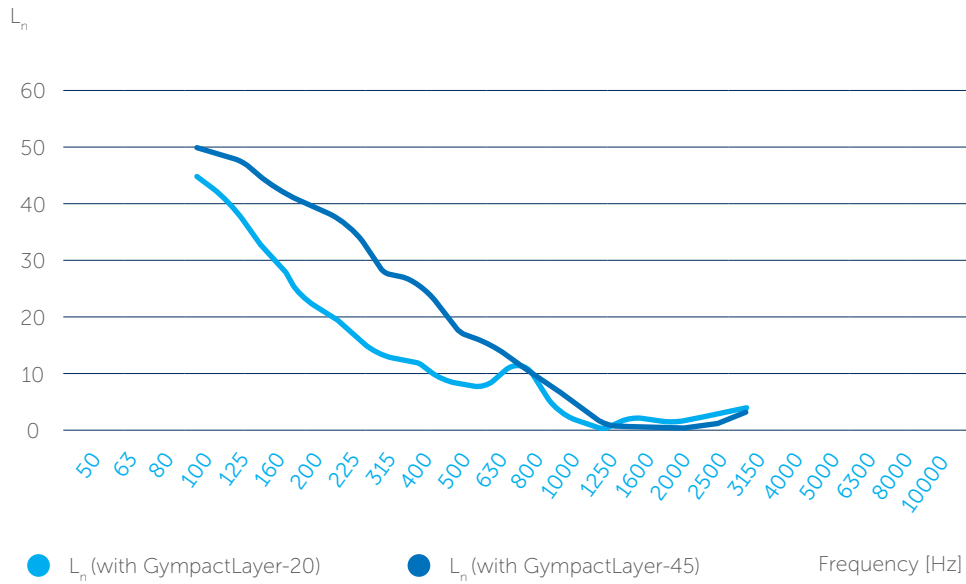
- Bare Slab (200 mm)
- Stravigym SP with Stravigym GympactLayer-20
- Stravigym SP with Stravigym GympactLayer-45

\*Test report available upon request

## Test Report Riverbank IN17-40\* and IN19-034\* - Test Setups

Note: the test setups are the same as used for the drop-weight test..

### Acoustical Isolation



with GympactLayer-20			with GympactLayer-45		
IIC	HIIC	LIIC	IIC	HIIC	LIIC
ASTM E989-21	ASTM E3222-20a	ASTM E3207-21	ASTM E989-21	ASTM E3222-20a	ASTM E3207-21
70	94	67	75	98	72

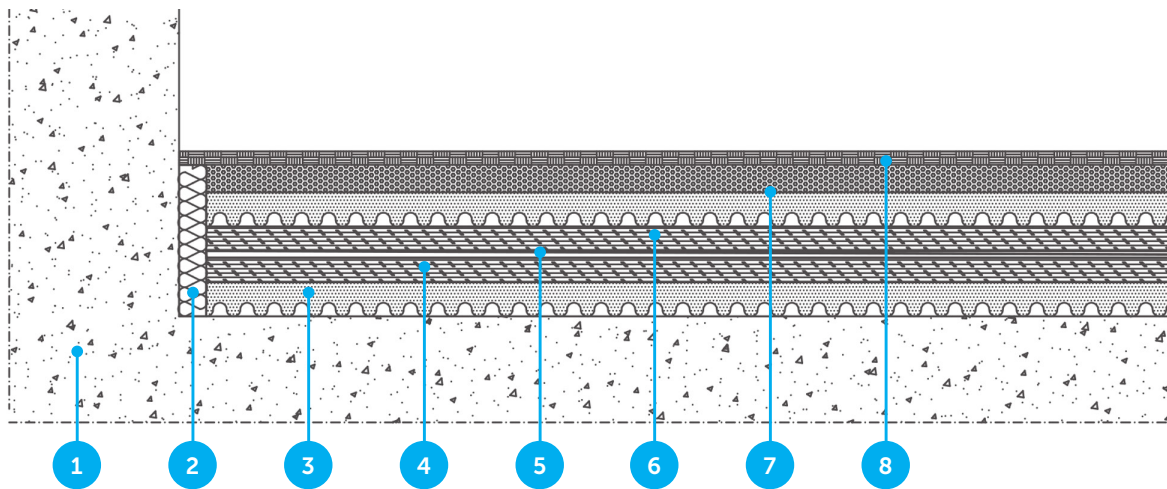
\*Test report available upon request



## TYPICAL ASSEMBLY

### Stravigym SP

1. Structural slab
2. Perimeter Strip or air void
3. Stravigym Mat-W<sub>x</sub>
4. Plywood load distribution layer 1 (or other suitable load distribution layer)
5. Damping Layer
6. Plywood load distribution layer 2 (or other suitable load distribution layer)
7. GympactLayer\*\*
8. Floor covering

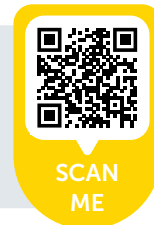


**Note:** additional information about installation is available upon request.

\*\*All Stravigym standard solutions can be combined with different Stravigym GympactLayer. The right selection of Stravigym GympactLayer allows choosing the best solution for the different gym activities.



Other Stravigym SP assemblies available on our test data platform Stravi-dB.



## DISCLAIMER

This information is accurate to the best of our knowledge at the time of issue. Information, data and recommendations provided are based on industry accepted testing and prior product usage. It is intended as descriptive of the general capabilities and performance of our products and does not endorse applicability for any particular project. We reserve the right to change products, performance, and data without notice. This document replaces all information supplied prior to the publication hereof.